



GUILDHALL

.....

GUILDHALL CABINET SHOPS LIMITED



GUILDHALL



Section 1



Section 2



Section 3



Section 4



Section 5



Section 6



Section 7



Section 8

CONTENTS

- 1 **CHESTS & COMMODOES**
Chests of Drawers
Night Tables
Highboys
Bow Front Commodes
- 2 **BOOKCASES & SIDEBOARDS**
China Cabinets
Buffets
AV Cabinets
- 3 **TABLES**
Meeting Tables
Dining Tables
Boardroom Tables
- 4 **CHAIRS**
Side Chairs
Arm Chairs
Benches
- 5 **DESKS & CREDENZAS**
Table Desks
Credenza, Telephone Tables
Executive Desks
Reception Desks
- 6 **SOFT SEATING**
Sofas
Wing Chairs
Club Chairs
- 7 **TABLES**
Occasional Tables
Coffee Tables
Lamp Tables
Consoles Tables
- 8 **CUSTOM**
Selected Specials

WE WOULD LIKE TO ACKNOWLEDGE OUR CLIENTS WHO HAVE GRACIOUSLY PERMITTED US TO USE THE PHOTOGRAPHS OF THEIR OFFICES IN OUR CATALOGUE, AS WELL AS THEIR DESIGNERS AND PHOTOGRAPHERS:
MANULIFE FINANCIAL HEAD OFFICE, DESIGNED BY ADAMSON ASSOCIATES ARCHITECTS IN ASSOCIATION WITH MCD DESIGN GROUP LTD. AND PHOTOGRAPHED BY ELAINE KILBURN / THE MOLSON COMPANIES DESIGNED BY FRANKLAND & ASSOCIATES LIMITED AND PHOTOGRAPHED BY ELAINE KILBURN / NEWCOURT CREDIT GROUP DESIGNED BY HELEN MOFFAT ASSOCIATES LIMITED AND PHOTOGRAPHED BY DAVID WHITTAKER / GUILDHALL CABINET SHOPS LIMITED WORKSHOP PHOTOGRAPHED BY RICHARD JOHNSON OF INTERIOR IMAGES.



GUILDHALL



ORDERING INFORMATION

All of our furniture is made to order - there is no stock. The photographs shown in this catalogue are of product made for clients over the years. In most cases, changes can be easily accommodated - sizing, hardware, woods, colour, drawer and door configurations to mention a few. Contact your sales representative or Guildhall at the number below with any questions. All orders are FOB Guildhall Cabinet Shops Limited, 11 Jutland Road, Toronto, Ontario, Canada, M8Z 2G6 - Fax:(416)255-8091.

DELIVERY

Production times vary depending on the size of order. Delivery times will be quoted and then confirmed at time of order. Generally, our production time required is 8 to 12 weeks.

TERMS

On established accounts, our standard terms are 40% deposit, net 10 days. New accounts require a 40% deposit and payment prior to shipment. Overdue accounts will be charged 2% per month.

PRICING

Due to the "made to order" nature of our product, a price list is not available. Prices are available upon request. Contact your sales representative or call Guildhall at the number listed below.

CLAIMS

Unfortunately, Guildhall cannot be responsible for freight or concealed damages. Please inspect and claim all damages with the carrier immediately upon receipt of your shipment.

STORAGE

We would be pleased to hold your order for up to a week if necessary. Should storage be required beyond that point, storage charges will be invoiced.

TITLE

Title to furniture products will remain with Guildhall until all invoices are paid in full.

FIRST PRINTING
SECOND PRINTING

August 1996
August 2001



G U I L D H A L L

1

CHESTS & COMMODES

Chests of Drawers

Night Tables

Highboys

Bow Front Commodes



Newcourt Credit Group



GUILDHALL



#5065

SERPENTINE CHEST

60"W X 20"D X 32"H

Illustrated in mahogany with crotch mahogany drawer faces and side gables.



#951

SEMI- CIRCULAR COMMODE

32"W X 16"D X 32"H

Illustrated in mahogany with book matched crotch mahogany and inlays.



#947

SEMI- CIRCULAR COMMODE

32"W X 16"D X 32"H

Illustrated in mahogany with book matched yew-wood and inlays.
Edge of top banded with cherry and boxwood inlays.



#8120

SEMI- CIRCULAR COMMODE

32"W X 16"D X 32"H

Illustrated in mahogany with crotch mahogany faces and inlays.



G U I L D H A L L



#5064

BOW FRONT COMMODE

42"W x 18"D x 33"H

Illustrated in mahogany and crotch mahogany with inlays.



#3255

CABINET

30"W x 18"D x 30"H

Illustrated in mahogany with crotch mahogany door faces with inlaid ebony lines.



#8121A

**SEMI-CIRCULAR
COMMODE**

32"W x 16"D x 32"H

Illustrated in mahogany with crotch mahogany faces and inlays. Satinwood crossbanding on top surface.



#8121

**SEMI-CIRCULAR
COMMODE**

32"W x 16"D x 32"H

Illustrated in mahogany with crotch mahogany faces and inlays. Rosewood crossbanding on top surface.



GUILDHALL



#5059

BOW FRONT CHEST OF DRAWERS

41" W X 18 1/4" D X 31" H

Illustrated in crotch mahogany with inlays.



#317

CHEST OF DRAWERS

36" W X 19" D X 33" H

Illustrated in mahogany with crotch mahogany drawer faces with inlays.



#113

SERPENTINE CHEST

30" W X 18" D X 28 3/4" H

Illustrated in mahogany with crotch mahogany drawer faces.



#282

CHEST OF DRAWERS

39" W X 19" D X 32 3/4" H

Illustrated in mahogany.



GUILDHALL



#5060
CHEST OF DRAWERS
39"W X 19"D X 32"H
Illustrated in mahogany with crotch mahogany drawer faces.



#133
MINIATURE CHEST
22"W X 15"D X 25"H
Illustrated with yew-wood drawer faces.



#4270
MINIATURE CHEST
23"W X 18"D X 23½"H
Illustrated in mahogany with crotch mahogany door faces.



#4261
MINIATURE CHEST
24"W X 18"D X 26"H
Illustrated in mahogany with crotch mahogany doors and inlays.



#536A
CABINET
36"W X 18"D X 30"H
Illustrated in mahogany and crotch mahogany inlaid doors.



#4271
CHIPPENDALE MINIATURE CHEST
27"W X 18"D X 27"H
Illustrated in flat cut mahogany with carved fret work on chamfered corners.



#4260
MINIATURE CHEST
24½"W X 18"D X 22½"H
Illustrated in mahogany with burl walnut drawer faces.



#4262
MINIATURE CHEST
27"W X 18"D X 25"H
Illustrated in mahogany with crotch mahogany drawer faces. Pull out shelf shown above the drawers.



#209
MILITARY CHEST
16"W X 18"D X 21"H
Illustrated in mahogany.



GUILDHALL



#223
MILITARY HIGH BOY
36"W x 20"D x 53"H
Illustrated in mahogany.



#5066
SERPENTINE CHEST
44"W x 23"D x 33½"H
Illustrated in mahogany.



#214
MILITARY CHEST
30"W x 17"D x 33"H
Illustrated in mahogany.
(For handles see model #223 above)



#213
MILITARY CHEST
32"W x 18"D x 23"H
Illustrated in mahogany.
(For handles see model #223 above)



GUILDHALL



#554

DOUBLE DRESSER

60"W X 22"D X 31"H

Illustrated in mahogany with raised crotch
mahogany banding on the drawers.



#4272

CHIPPENDALE DOUBLE DRESSER

72"W X 20"D X 32 $\frac{3}{4}$ "H

Illustrated with carved fret work on chamfered corners.



#341

EMPIRE CHEST OF DRAWERS

48"W X 20"D X 33"H

Illustrated in mahogany with crotch mahogany drawer
fronts and ebonized columns.



#350

EMPIRE COMMODE

42"W X 16"D X 32"H

Illustrated in mahogany with French brasses.



GUILDHALL



#352

EMPIRE COMMODE

41"W x 17"D x 34"H

Illustrated in mahogany with crotch mahogany drawer face and door frames, onset marble top and double diamond weave grillage on door fronts.



#352A

EMPIRE TWO DOOR CABINET

41"W x 19½"D x 33"H

Illustrated in mahogany with crotch mahogany drawer face and door frames, wood top and custom elliptical grillage on door fronts.



#364

EMPIRE CABINET

36"W x 15"D x 31"H

Illustrated in mahogany with ebonized columns and French brasses.



#5006

COMMODOE

36½"W x 20"D x 30"H

Illustrated in mahogany and crotch mahogany drawer faces and door frames. Doors with double diamond weave grillage.



G U I L D H A L L



#836

HIGH BOY

37" W x 19 1/2" D x 50" H

Illustrated in walnut



#834

CHEST OF DRAWERS

72" W x 19 1/2" D x 32 3/4" H

Illustrated in walnut.



#110A

TWO DOOR CHEST

35" W x 18 3/4" D x 30" H

Illustrated in walnut with carved base moulding.



#503

TWO DOOR COMMODORE

48" W x 18" D x 32" H

Illustrated in walnut.



#211

TWO DOOR CHEST

49 1/2" W x 18" D x 33" H

Illustrated in walnut.



#170

TWO DOOR CHEST

36" W x 18" D x 32" H

Illustrated in mahogany with crotch mahogany door faces, hand carved urn and pateras.



GUILDHALL



#5062

CHEST OF DRAWERS

60"W X 20"D X 32"H

Illustrated in mahogany with hand carving and gilt trim.



#713

TWO DRAWER CHEST

40"W X 21"D X 28½"H

Illustrated in walnut with gilt trim.



#885

BOMBAY CHEST

37¼"W X 19½"D X 28"H

Illustrated in walnut with hand carved details and gilt trim.



GUILDHALL



#283

DOUBLE DRESSER

72"W X 19"D X 32 3/4"H

Illustrated in mahogany with crotch mahogany drawer faces with inlays.



#206

NIGHT TABLE

24"W X 18"D X 26"H

Illustrated in walnut.



#5073

A. V. CABINET

37"W X 22"D X 40"H

Illustrated in mahogany and crotch mahogany. This cabinet can be used for home entertainment equipment.



#201

CHEST OF DRAWERS

73"W X 20"D X 32 1/2"H

Illustrated in walnut.



#203

HIGH BOY

37"W X 19"D X 50"H

Illustrated in walnut.



#281

CHEST ON CHEST

37"W X 19"D X 57 1/2"H

Illustrated in mahogany.



GUILDHALL

2 BOOKCASES & SIDEBOARDS

China Cabinets
Buffets
AV Cabinets



Newcourt Credit Group



GUILDHALL



#5010

BREAKFRONT BOOKCASE

72"W x 17"D x 86"H

Illustrated in mahogany and crotch mahogany. Door frames and frieze crossbanded with crotch mahogany.



#317A

BREAKFRONT SIDEBOARD

72"W x 18"D x 33"H

Illustrated in mahogany and crotch mahogany door and drawer faces with inlaid borders.



#143

SIDEBOARD

72"W x 18"D x 34"H

Illustrated in mahogany and crotch mahogany drawer and door faces.



GUILDHALL



#785A
BREAKFRONT BOOKCASE
70"W x 20 $\frac{3}{4}$ "D x 78"H
Illustrated in walnut with handcarved swags
and double weave grillage.



#5020
BREAKFRONT BOOKCASE
66"W x 16 $\frac{1}{2}$ "D x 78"H
Illustrated in mahogany and crotch mahogany
faces and door frames.



#771
BOOKCASE
41 $\frac{1}{2}$ "W x 18"D x 78"H
Illustrated in walnut with hand carved
rosettes and double weave grillage.



#535
BOOKCASE
50 $\frac{1}{2}$ "W x 18 $\frac{1}{2}$ "D x 78 $\frac{3}{4}$ "H
Illustrated in mahogany and crotch
mahogany door faces.



GUILDHALL



#5090

BREAKFRONT BOOKCASE

60"W x 15"D x 84"H

Illustrated in mahogany with yew-wood door panels, frames and frieze.



#5068

QUEEN ANNE SERPENTINE
SIDEBOARD

60"W x 24"D x 31"H

Illustrated in walnut with burl walnut faces.



#452

SERVING TABLE WITH
TWO DRAWERS

55"W x 19½"D x 31¼"H

Illustrated in solid oak.



GUILDHALL

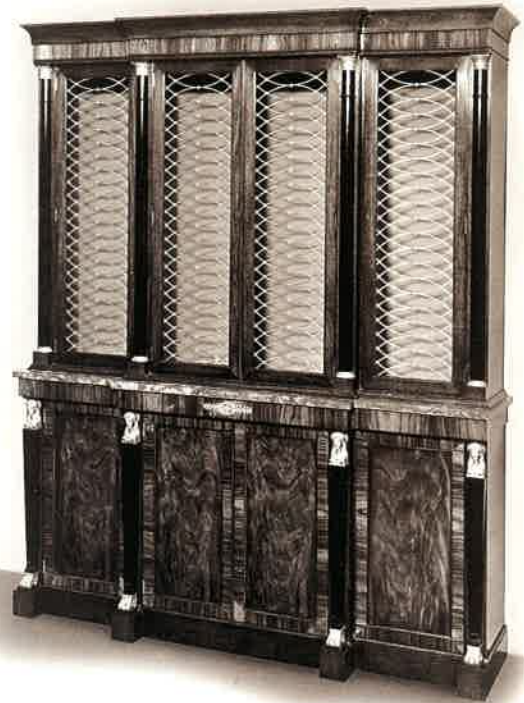


#3025B

HIGH CABINET

82"W x 20"D x 80"H

Illustrated with eight file drawers in lower case, glass-paned doors with shelving behind in upper case.



#5015

EMPIRE BREAKFRONT BOOKCASE

72"W x 20"D x 84"H

Illustrated in mahogany with crotch mahogany and rosewood with ebonized columns and brass fittings.



#5057

SIDEBOARD

96"W x 21"D x 33"H

Illustrated in mahogany with crotch mahogany door panels, rosewood crossbanded door frames and drawer faces.



#383

EMPIRE SIDEBOARD

71½"W x 20¾"D x 33"H

Illustrated in mahogany with crotch mahogany door panels, rosewood crossbanded door frames and apron.



GUILDHALL



#5011
BREAKFRONT BOOKCASE
72"W x 18"D x 88"H
Illustrated in mahogany with curved fret pediment,
equipped with lighting and lined back.



#3126
BREAKFRONT SIDEBOARD
52"W x 18"D x 34"H
Illustrated in mahogany with crotch mahogany
faces.



#3125
BREAKFRONT SIDEBOARD
60"W x 16"D x 33"H
Illustrated in mahogany with crotch mahogany
drawer and door faces.



GUILDHALL



#212
HIGH CABINET
65"W x 18"D x 86"H
Illustrated in antique painted finish.



#110
BOOKCASE
43½"W x 18"D x 84"H
Illustrated in antique painted finish.



#211
SIDEBOARD
65"W x 18"D x 33"H
Illustrated in walnut.



#724
SIDEBOARD
68"W x 19"D x 34"H
Illustrated in walnut. Also available in 46" width.



GUILDHALL



#5040
BOOKCASE
45" W x 16½" D x 84" H
Illustrated in mahogany and crotch mahogany
doors and door frames.



#5016
EMPIRE CABINET
40" W x 20" D x 88" H
Illustrated in mahogany and rosewood with
ebonized columns and brass fittings.



#198A
BREAKFRONT SIDEBOARD
72" W x 17" D x 33" H
Illustrated in mahogany and crotch mahogany
drawer and door faces with inlays.



#317
BREAKFRONT SIDEBOARD
72" W x 17" D x 33" H
Illustrated in mahogany and crotch mahogany door
and drawer faces with Chippendale mouldings.



GUILDHALL



#5020B
BREAKFRONT BOOKCASE
66"W X 16½"D X 88"H
Illustrated in mahogany with crotch mahogany
faces and door frames.



#5061A
BOWFRONT SIDEBOARD
60"W X 16"D X 32"H
Illustrated in mahogany with crotch
mahogany and inlays.



#5061
COMMUNE
60"W X 16"D X 32"H
Illustrated in mahogany with crotch
mahogany and inlays.



GUILDHALL



#5093
BREAKFRONT BOOKCASE
72"W x 17"D x 88"H
Illustrated in mahogany with inlaid drawers and doors, with pediment.



#3130
CREDENZA
90"W x 24"D x 30"H
Illustrated in flat cut mahogany with Chippendale mouldings.



#5069
CHIPPENDALE CABINET WITH
BOW FRONT
90"W x 21"D (AT CENTRE) x 29"H
Illustrated with mahogany and crotch mahogany faces, Chippendale mouldings and gadroon carving.



G U I L D H A L L



#5017

BREAKFRONT CABINET

72"W x 18"D x 84"H

Illustrated in mahogany with accents of
yew-wood on frieze.



#5092

BREAKFRONT BOOKCASE

60"W x 15"D x 84"H

Illustrated in mahogany and crotch mahogany.



#5080

BREAKFRONT BOOKCASE

63"W x 18"D x 86"H

Illustrated in mahogany with crotch
mahogany door faces and frieze.



#5091

BREAKFRONT BOOKCASE

72"W x 18"D x 85"H

Illustrated in mahogany with rosewood crossbanding
on upper and lower door frames.



GUILDHALL



#5095
BREAKFRONT BOOKCASE
74"W x 19"D x 88"H
Illustrated in mahogany with hand carved pediment,
frieze, apron and base.



#5058
SIDEBOARD
66"W x 26"D x 36"H
Illustrated in mahogany and crotch mahogany faces,
one centre drawer with two outer cupboard doors.



#978A
SERPENTINE SIDEBOARD
60"W x 20"D x 35"H
Illustrated in mahogany with crotch mahogany door
and drawer faces. Also available in 72"W x 20"D x 35"H.



GUILDHALL



#5085
BOOKCASE
32"W x 16"D x 82"H
Illustrated in mahogany with crotch
mahogany, crossbanding on frieze and upper
doors, crotch mahogany faces on base.



#5043
CORNER CABINET
31"W x "D x 75½"H
Illustrated in mahogany and crotch
mahogany.



#5074
DISPLAY CABINET
26"W x 15"D x 78"H
Illustrated in mahogany and satinwood.



#5096
BREAKFRONT BOOKCASE
72"W x 16"D x 85"H
Illustrated in mahogany with panel doors and inlays.



#522
BREAKFRONT BOOKCASE
76"W x 15½"D x 88"H
Illustrated in mahogany with frieze and upper doors
crossbanded with rosewood.



GUILDHALL



#5044
BOOKCASE
46"W x 16"D x 80"H
Illustrated in walnut.



#5067
QUEEN ANNE HIGH BOY
40 $\frac{3}{4}$ "W x 19 $\frac{1}{2}$ "D x 83"H
Illustrated in mahogany.



#5086
BOOKCASE
46"W x 16"D x 82"H
Illustrated in mahogany with crotch
mahogany doors and frieze.



#5045
BOOKCASE
48"W x 16"D x 84"H
Illustrated in mahogany and crotch
mahogany with pediment.



G U I L D H A L L



#5019AV
BIEDERMEIER AUDIO VISUAL
CABINET
48"W X 27"D X 76"H
Illustrated in mahogany with crotch mahogany faces.



#5019AV
BIEDERMEIER AUDIO VISUAL
CABINET
48"W X 22"D X 76"H
Interior illustrated with pull-out swivel television shelf and
VCR shelf above.



#5018AV
BIEDERMEIER AUDIO VISUAL
CABINET
48"W X 22"D X 76"H
Illustrated in cherry with inlaid borders and
ebonized columns.



#5018AV
BIEDERMEIER AUDIO VISUAL
CABINET
48"W X 27"D X 76"H
Interior illustrated with pull-out swivel television shelf and
storage drawers.



GUILDHALL



#5010AV
AUDIO VISUAL CABINET
84"W x 28"D x 86"H
Interior illustrated with pull out swivel
television shelf and VCR shelf.



#5010AV
AUDIO VISUAL CABINET
84"W x 28"D x 86"H
Illustrated in mahogany with crotch
mahogany drawer and door faces.



#3127
BOWFRONT SIDEBOARD
66"W x 18"D x 32"H
Illustrated with crotch mahogany faces and inlays.



#5061B
SIDEBOARD
78"W x 22"D x 50"H
Illustrated in yew-wood with inlays and
mahogany solids.



GUILDHALL



#415
BREAKFRONT BOOKCASE
59"W X 17"D X 76½"H
Illustrated in mahogany and crotch mahogany.



#5090A
BREAKFRONT BOOKCASE
60"W X 15"D X 84"H
Illustrated in mahogany with crotch mahogany
door panels frames and frieze.



#536
BREAKFRONT SIDEBOARD
60"W X 18"D X 31"H
Illustrated in mahogany and crotch mahogany
with fan inlays.



#785
SIDEBOARD
72"W X 21"D X 35"H
Illustrated in walnut with hand carved swags.



GUILDHALL

3 TABLES

Meeting Tables
Dining Tables
Boardroom Tables



Newcourt Credit Group



GUILDHALL



#4

MEETING TABLE WITH PEDESTAL DESIGN #4 A

36' L X 60" W X 30" H

Illustrated in mahogany with six sweep platform pedestals and solid brass Georgian claw feet with casters. The top is shown with a crossbanded border of rosewood with inlaid ebony line, with a maximum width of 72".



#4

TABLE WITH PEDESTAL DESIGN #4 B

CUSTOM SIZES AVAILABLE

Illustrated in mahogany with four sweep platform base and solid brass lion's claw feet with casters. Rectangular top size 72" wide maximum.



#4

TABLE WITH PEDESTAL DESIGN #4 A

CUSTOM SIZES AVAILABLE

Illustrated in mahogany with four platform pedestal and solid brass Georgian feet and casters. The top is shown with a crossbanded border of rosewood with inlaid ebony line. Top size is 72" wide maximum.



#16

PEDESTAL DESIGN #16*

CUSTOM SIZES AVAILABLE

Illustrated in mahogany. Top size is 54" wide maximum with four sweeps and 44" wide maximum with three sweeps.



ORIENTAL
CONFERENCE TABLE

21' L x 54" W x 29" H

Illustrated in mahogany with ebony finish.
Sections can be 60" - 78" long.



#6

CHIPPENDALE CONFERENCE
TABLE

10' L x 48" W x 30" H

Illustrated in mahogany with rope mould edge and stretchers. Custom sizes available.



#2

PEDESTAL DESIGN #2

CUSTOM SIZES AVAILABLE

Illustrated in mahogany with three sweeps. The table top is shown with a triple reeded edge and an apron. Top size is 54" wide maximum with four sweeps and 44" wide maximum with three sweeps.



#5

PEDESTAL DESIGN #5

CUSTOM SIZES AVAILABLE

Illustrated in mahogany with three sweeps. Top size is 54" wide maximum with four sweeps and 44" wide maximum with three sweeps.



#6

CHIPPENDALE CONFERENCE TABLE WITH BASE
DESIGN #6

120" L x 48" W x 29 1/2" H

Illustrated in mahogany with two sections. Sections are not to exceed 96" in length or 72" in width. Shown with a rope mould edge.



GUILDHALL



#9A

TWO PEDESTAL DINNING TABLE WITH
PEDESTAL DESIGN #9

78" L x 44" W x 29½" H plus 2 - 22" leaves (leaves not shown)

Illustrated in mahogany with flat cut mahogany top and yew-wood
crossbanding. Custom sizes available.



#10

PEDESTAL DESIGN #10

CUSTOM SIZES AVAILABLE

Illustrated in mahogany with four sweeps and solid
brass lion's claw feet with casters. Top size is 54" wide
maximum with four sweeps and 44" wide maximum
with three sweeps.



#3

BOARDROOM PEDESTAL #3

CUSTOM SIZES AVAILABLE

Illustrated in mahogany with four sweep platform
base. The table top is shown with a bullnosed edge
and no apron. Top size is 72" wide maximum.



#12

PEDESTAL DESIGN #12

CUSTOM SIZES AVAILABLE

Illustrated in mahogany with four sweeps and solid
brass lion's claw feet with casters. Top size is 54"
wide maximum with four sweeps and 44" wide
maximum with three sweeps.



#11

PEDESTAL DESIGN #11

CUSTOM SIZES AVAILABLE

Illustrated in mahogany with four sweeps and solid brass lion's
claw feet with casters. Top size is 54" wide maximum with four
sweeps and 44" wide maximum with three sweeps.



G U I L D H A L L



#14

TWO PEDESTAL DINING TABLE WITH #14 PEDESTAL
76" L x 44" W x 29½" H plus 2 - 22" leaves (leaves not shown)
Illustrated in mahogany with flat cut mahogany top and yew-wood crossbanding.



TABLE TOP #1

Oval top shape illustrated with yew-wood crossbanding, inlaid boxwood line and flat cut mahogany.



TABLE TOP #2

Radiused corner top shape illustrated with crotch mahogany crossband, inlaid black line and flat cut mahogany.



TABLE TOP #3

Modified "D" end illustrated with rosewood crossbanding, inlaid black line and crotch mahogany.



TABLE TOP #4

Half round end shape illustrated with satinwood crossband, inlaid boxwood line and flat cut mahogany.



GUILDHALL



#15

TWO PEDESTAL DINING TABLE

78" L x 48" W x 29" H plus 3 - 18" leaves (leaves not shown)

Illustrated in mahogany with flat cut mahogany top and cross-banding. Solid brass casters and medallions.



#1

PEDESTAL DESIGN #1

CUSTOM SIZES AVAILABLE

Illustrated in mahogany with four sweeps and solid brass lion's claw feet with casters. The table top is shown with a triple reeded edge and an apron. Top size is 54" wide maximum with four sweeps and 44" wide maximum with three sweeps.



#13

CHIPPENDALE BASE DESIGN #13

CUSTOM SIZES AVAILABLE

Illustrated in mahogany with Chippendale mouldings on base. The table top shown is with a bullnosed edge. Top size is 72" wide maximum.



#13A

CHIPPENDALE BASE DESIGN #13A

CUSTOM SIZES AVAILABLE

Illustrated in mahogany with Chippendale mouldings on base and gadroon moulding on edge of top. Top size is 72" wide maximum.



#17

PEDESTAL BASE DESIGN #17

CUSTOM SIZES AVAILABLE

Illustrated in mahogany with ebonized columns and French Brass rings. Top size is 72" wide maximum.



#945
 TWO PEDESTAL DINING TABLE
 78" L x 44" W x 29 1/4" H plus 3 - 18" leaves (leaves not shown)
 Illustrated in mahogany with four sweeps per pedestal. Solid brass lion's claw feet with casters. Crotch mahogany top with rosewood crossbanding, inlaid ebony line and rosewood edge.
 Custom sizes available.



#18
 PEDESTAL DESIGN #18
 72" L x 36" W x 29 1/2" H
 Illustrated in mahogany with four sweeps centre stretcher and solid brass lion's claw casters. Can be used as an individual table or multiple sections. The maximum size is 54" x 96" for each section.



#450
 DINING TABLE
 72" L x 42" W x 29 1/2" H
 Illustrated in oak with 21" draw leaf at each end.



#6020
 DROP LEAF CONFERENCE OR DINING TABLE
 78" L x 60" W x 29 1/2" H (open size)
 Illustrated in mahogany with crotch mahogany crossbanding and inlaid ebony line. Table comes with two 16" wide leaves. Leaves can have rounded shape to create oval shape when open. Closed size is 28" wide.



#517
 DINING TABLE
 66" L x 44" W x 29 1/2" H
 Illustrated in mahogany with crotch mahogany crossbanding.



GUILDHALL



#723
ROUND DINING TABLE
44" DIA X 29"H
Illustrated in walnut.



#473A
DINING TABLE
66"L X 36"W X 29"H
Illustrated in oak with 18" draw leaf at each end.



#942
DINING TABLE
66"L X 44"W X 29½"H plus 3 - 18" leaves (leaves not shown)
Illustrated in mahogany with hand carved rosettes.



#844
DROP LEAF TABLE
60"L X 44"W X 29"H
Illustrated in oak. Closed size 60" x 21" x 29".



#473B
DINING TABLE
66"L X 36"W X 29½"H
Illustrated in oak with 18" draw leaf at each end.



GUILDHALL



#311

REGENCY DINING TABLE WITH APRON

68" L x 44" W x 29" H plus 2 - 20" leaves (leaves not shown)

Illustrated in mahogany with brasses.



#465

DINING TABLE

72" L x 36" W x 29" H

Illustrated in oak.



#474

DINING TABLE

66" L x 36" W x 29" H

Illustrated in oak with 18" draw leaf at each end.



#948

QUEEN ANNE DOUBLE PEDESTAL
TABLE

66" L x 44" W x 29" H plus 3 - 18" leaves (leaves not shown)

Illustrated in mahogany with three sweeps per pedestal. Table top
shown with bullnosed edge.



#163

SINGLE PEDESTAL OVAL TABLE

62" L x 44" W x 29" H

Illustrated in mahogany.



GUILDHALL



#19
CONFERENCE TABLE
16' L x 48" W x 29½" H
Illustrated in mahogany with rosewood apron and crossbanding plus black line on top. Top size is 72" wide maximum.



#785
OVAL DINING TABLE
66" L x 44" W x 29" H plus 3 - 18" leaves (leaves not shown)
Illustrated in walnut with hand carved swags.



#6035
EMPIRE CENTRE TABLE
48" DIA x 30" H
Illustrated in mahogany with rosewood crossbanding and ebony inlay. Rosewood apron with inserts of plaque azurée.



#389
DINING TABLE
50" DIA x 29" H plus 3 - 18" leaves (leaves not shown)
Illustrated in mahogany with brass collars and feet.



#998
DINING TABLE
66" L x 48" W x 29½" H plus 3 - 18" leaves (leaves not shown)
Illustrated in walnut.



GUILDHALL



#502

DINING TABLE

66" L x 44" W x 29½" H plus 3 - 18" leaves (leaves not shown)

Illustrated in walnut with hand carved apron.



#368

TWO PEDESTAL DINING TABLE

90" L x 48" W x 29½" H

Illustrated in mahogany with flat cut mahogany top and yew-wood crossbanding. Table top edge crossbanded with cherry and boxwood.



#944

DOUBLE PEDESTAL TABLE

66" L x 44" W x 29½" H plus 3 - 18" leaves (leaves not shown)

Illustrated in mahogany with three sweeps per pedestal. Solid brass lion's claw feet with casters. Table top shown with double reeded edge.



#9B

SINGLE PEDESTAL WITH PEDESTAL DESIGN #9

54" DIA x 30" H

Illustrated in mahogany with four sweeps and solid brass lion's claw feet with casters. The table top is shown with a double reeded edge.



GUILDHALL

4 CHAIRS

Side Chairs
Arm Chairs
Benches



Newcourt Credit Group



GUILDHALL

4 CHAIRS

Side Chairs
Arm Chairs
Benches



Newcourt Credit Group



GUILDHALL



#17
CHIPPENDALE ARMCHAIR
22½" W x 21" D x 38" H
Illustrated in mahogany with hand carving.
Requires ¾ yd. of 50" plain fabric.



#3
CHIPPENDALE ARMCHAIR
23¾" W x 21½" D x 38¼" H
Illustrated in mahogany.
Requires ¾ yd. of 50" plain fabric.



#1
CHIPPENDALE ARMCHAIR
22" W x 22¾" D x 37½" H
Illustrated in mahogany.
Requires ¾ yd. of 50" plain fabric.



#8
CHIPPENDALE ARMCHAIR
24" W x 25½" D x 37½" H
Illustrated in mahogany with hand carving.
Requires ¾ yd. of 50" plain fabric.



#6
CHIPPENDALE ARMCHAIR
23" W x 23" D x 38½" H
Illustrated in mahogany with hand carving.
Requires ¾ yd. of 50" plain fabric.



#4
CHIPPENDALE ARMCHAIR
24" W x 23" D x 38" H
Illustrated in mahogany.
Requires ¾ yd. of 50" plain fabric.



GUILDHALL



#2031
ARMCHAIR
23½" W X 27½" D X 39" H
Illustrated in mahogany with upholstered arm.
Requires 1¾ yds. of 50" plain fabric.



#2040
ARMCHAIR
25" W X 27½" D X 39" H
Illustrated in mahogany with upholstered arm.
Requires 1¾ yds. of 50" plain fabric.



#2180
ARMCHAIR
27" W X 27¾" D X 39" H
Illustrated in mahogany with upholstered arm with detail in back.
Requires 2½ yds. of 50" plain fabric.



#32
BOARDROOM ARMCHAIR
25" W X 28½" D X 40¾" H
Illustrated in mahogany with line of brass nails.
Requires 2½ yds. of 50" plain fabric.



#2030
ARMCHAIR
25" W X 27½" D X 40" H
Illustrated in mahogany with upholstered arm.
Requires 1¾ yds. of 50" plain fabric.



#37
ARMCHAIR
25" W X 26" D X 39" H
Illustrated in mahogany with hand carving.
Requires 2½ yds. of 50" plain fabric.



#36
ARMCHAIR
24" W X 27" D X 36" H
Illustrated in mahogany.
Requires 1¾ yds. of 50" plain fabric.



#2045
ARMCHAIR
23½" W X 23½" D X 40" H
Illustrated in mahogany with upholstered arm.
Requires 1¾ yds. of 50" plain fabric.



#29
SIDE CHAIR
22" W X 24½" D X 39½" H
Illustrated in mahogany.
Requires 1¾ yds. of 50" plain fabric.



GUILDHALL



#7
CHIPPENDALE ARMCHAIR
24"W x 23 3/4"D x 39 1/2"H
Illustrated in mahogany with hand carving.
Requires 3/4 yd. of 50" plain fabric.



#16
CHIPPENDALE ARMCHAIR
22 1/2"W x 21"D x 37 1/2"H
Illustrated in mahogany.
Requires 3/4 yd. of 50" plain fabric.



#32A
ARMCHAIR
25"W x 21"D x 39"H
Illustrated in mahogany with diamond tufted leather.
Requires 2 1/2 yds. of 50" plain fabric.



#14
CHIPPENDALE ARMCHAIR
24"W x 24"D x 39"H
Illustrated in mahogany.
Requires 3/4 yd. of 50" plain fabric.



#13
LADDER BACK
CHIPPENDALE ARMCHAIR
23"W x 22 1/4"D x 38"H
Illustrated in mahogany.
Requires 3/4 yd. of 50" plain fabric.



#5
CHIPPENDALE ARMCHAIR
23"W x 23"D x 37 1/2"H
Illustrated in mahogany with hand carving.
Requires 3/4 yd. of 50" plain fabric.



GUILDHALL



#2181
BOARDROOM ARMCHAIR
26¼" W x 25½" D x 38" H
Illustrated in mahogany with upholstered arm.
Requires 2½ yds. of 50" plain fabric.



#2840
SWIVEL CHAIR
25" W x 27½" D x 42" H
Illustrated in mahogany with upholstered arm.
Requires 2½ yds. of 50" plain fabric.



#2800 DT
SWIVEL CHAIR
25" W x 21" D x 41" H
Illustrated in mahogany with diamond tufted upholstery. Supplied with a five-prong base.
Requires 2½ yds. of 50" plain fabric.



#2800
SWIVEL CHAIR
25" W x 21" D x 41" H
Illustrated in mahogany.
Supplied with a five-prong base.
Requires 2½ yds. of 50" plain fabric.



#2061
ARMCHAIR
26¼" W x 27¼" D x 39½" H
Illustrated with mahogany show wood and scroll arm.
Requires 3¼ yds. of 50" plain fabric.



#35A
ARMCHAIR
24½" W x 27½" D x 41" H
Illustrated in mahogany with closed arm and wings.
Requires 4 yds. of 50" plain fabric for the tight seat, or 5¼ yds. for the cushion seat.



#35
ARMCHAIR
24½" W x 27½" D x 41" H
Illustrated in mahogany with scroll arm and wings.
Requires 4 yds. of 50" plain fabric for the tight seat, or 5¼ yds. for the cushion seat.



GUILDHALL



#2100

GEORGIAN ARMCHAIR

27" W x 29" D x 39" H

Illustrated in mahogany with hand carving.

Requires 2 3/4 yds. of 50" plain fabric.



#2101

ARMCHAIR

27" W x 29" D x 39" H

Illustrated in mahogany with hand carving and closed arm.

Requires 3 2/3 yds. of 50" plain fabric.



#2105

GEORGIAN ARMCHAIR

24" W x 25" D x 40" H

Illustrated in mahogany with hand carving.

Requires 2 yds. of 50" plain fabric.



#2130

BENCH

60" W x 21" D x 19 1/2" H

Illustrated with mahogany base and diamond tufted upholstery.

Requires 2 yds. of 50" plain fabric.



#320

UPHOLSTERED BENCH

60" W x 16" D x 18 1/2" H

Illustrated with hand carved Queen Anne legs.

Requires 1 1/2 yds. of 50" plain fabric.



GUILDHALL



#1282A
HOURGLASS BACK ARMCHAIR
22 $\frac{3}{4}$ "W X 21"D X 35 $\frac{1}{2}$ "H
Illustrated in mahogany with inlaid border.
Requires $\frac{2}{3}$ yd. of 50" plain fabric for 2 seats.



#1282
HOURGLASS BACK SETTEE
54 $\frac{1}{2}$ "W X 21"D X 35 $\frac{1}{2}$ "H
Illustrated in mahogany with inlays and hand carving.
Requires $\frac{2}{3}$ yd. of 50" plain fabric.



#322
QUEEN ANNE BENCH
36"W X 16"D X 18"H
Illustrated in mahogany with slip seat.
Requires $\frac{2}{3}$ yd. of 50" plain fabric.



#889
DRESSING BENCH
37"W X 15"D X 25 $\frac{1}{2}$ "H
Illustrated in mahogany with hand carving.
Requires 1 $\frac{1}{3}$ yds. of 50" plain fabric.



#2155
ARMCHAIR
22"W X 25"D X 37 $\frac{1}{2}$ "H
Illustrated with mahogany show wood.
Requires 2 $\frac{1}{2}$ yds. of 50" plain fabric.



#1957
ARMCHAIR
22 $\frac{1}{2}$ "W X 26"D X 37"H
Illustrated with mahogany show wood.
Requires 1 $\frac{2}{3}$ yds. of 50" plain fabric.



#1956
ARMCHAIR
22 $\frac{1}{2}$ "W X 26"D X 37"H
Illustrated with mahogany show wood.
Requires 1 $\frac{2}{3}$ yds. of 50" plain fabric.



GUILDHALL



#10S
QUEEN ANNE SIDECHAIR
20½" W X 21½" D X 41½" H
Illustrated in mahogany with slip seat.
Requires ⅔ yd. of 50" fabric for 2 seats.



#10
QUEEN ANNE ARMCHAIR
23" W X 23" D X 41½" H
Illustrated in mahogany with slip seat.
Requires ⅔ yd. of 50" fabric for 2 seats.



#2175
ARMCHAIR
25" W X 26" D X 40" H
Illustrated in mahogany with hand carving on the front legs.
Requires 1¾ yds. of 50" plain fabric.



#2172
QUEEN ANNE ARMCHAIR
24" W X 27" D X 37½" H
Illustrated in walnut with hand carving on the front legs.
Requires 2 yds. of 50" plain fabric.



#2171
ARMCHAIR
25" W X 26¾" D X 42" H
Illustrated in mahogany with hand carving.
Requires 2¼ yds. of 50" plain fabric.



#2170
ARMCHAIR
25" W X 26¼" D X 42½" H
Illustrated in mahogany with hand carving.
Requires 2¼ yds. of 50" plain fabric.



#2005
 REGENCY ARMCHAIR
 22¼" W X 26¾" D X 35½" H
 Illustrated in ebonized finish with gilt trim.
 Requires 1½ yds. of 50" plain fabric.



#2026
 TUB CHAIR
 25" W X 25½" D X 34" H
 Illustrated in mahogany.
 Requires 2½ yds. of 50" plain fabric.



#2021
 TUB CHAIR
 25" W X 20½" D X 34" H
 Illustrated in mahogany.
 Requires 3 yds. of 50" plain fabric.



#2008
 ARMCHAIR
 22" W X 22½" D X 33¾" H
 Illustrated in mahogany with boxwood line.
 Requires ¾ yd. of 50" plain fabric.



#1958K
 EMPIRE ARMCHAIR
 22¼" W X 23½" D X 36½" H
 Illustrated in mahogany.
 Requires 1½ yds. of 50" plain fabric.



#1958
 EMPIRE ARMCHAIR
 22¼" W X 23½" D X 36½" H
 Illustrated in mahogany.
 Requires 1¾ yds. of 50" plain fabric.



GUILDHALL



#255
BANK OF ENGLAND
TUB CHAIR
25"W X 27"D X 32"H
Illustrated in mahogany.
Requires 3 yds. of 50" plain fabric.



#2025
TUB CHAIR
25"W X 24½"D X 34"H
Illustrated in mahogany.
Requires 2½ yds. of 50" plain fabric.



#2006
EMPIRE CHAIR
21"W X 22½"D X 34"H
Illustrated in mahogany with hand carving and gilt trim.
Requires 1½ yds. of 50" plain fabric.



#2195S
EMPIRE SIDE CHAIR
22"W X 26¾"D X 35¾"H
Illustrated in mahogany.
Requires 2 yds. of 50" plain fabric.



#2195
EMPIRE ARMCHAIR
22"W X 26¾"D X 35¾"H
Illustrated in mahogany.
Requires 2 yds. of 50" plain fabric.



#343
EMPIRE ARMCHAIR
22"W X 22¼"D X 33¾"H
Illustrated in mahogany with hand carvings.
Requires 2¼ yds. of 50" plain fabric.



GUILDHALL



#2014
CARVED STICK BACK ARMCHAIR
22½" W x 21" D x 35½" H
Illustrated in mahogany with hand carving.
Requires ¾ yd. of 50" plain fabric.



#2000
TRANSITIONAL ARMCHAIR
25" W x 24½" D x 36" H
Illustrated in mahogany with cushion seat.
Requires 2 yds. of 50" plain fabric for a
tight seat and 3 yds. for the cushion seat.



#201
ARMCHAIR
25" W x 25½" D x 34½" H
Illustrated in mahogany.
Requires 3⅓ yds. of 50" plain fabric.



#2009
CASTLE HOWARD CHAIR
27" W x 31½" D x 36½" H
Illustrated with ebonized finish and gilt trim.
Requires 4½ yds. of 50" plain fabric.



#518
TUB CHAIR
23" W x 23" D x 34½" H
Illustrated with mahogany show wood.
Requires 3 yds. of 50" plain fabric.



#2064
TRANSITIONAL ARMCHAIR
25½" W x 27" D x 34" H
Illustrated with mahogany show wood and scroll arm.
Requires 3¼ yds. of 50" plain fabric.



GUILDHALL



#295U
SHIELD BACK ARMCHAIR
22½" W x 19½" D x 37" H
Illustrated in mahogany with upholstered
back and hand carving.
Requires 1⅔ yds. of 50" plain fabric.



#2012
HEPPELWHITE SHIELD BACK
ARMCHAIR
22½" W x 19" D x 38½" H
Illustrated in mahogany.
Requires ¾ yd. of 50" plain fabric.



#295
SHIELD BACK ARMCHAIR
22½" W x 19" D x 37" H
Illustrated in mahogany with hand carving.
Requires ¾ yd. of 50" plain fabric.



#512
TUB CHAIR
23" W x 23½" D x 31" H
Illustrated with mahogany show wood
and brass nails.
Requires 3 yds. of 50" plain fabric.



#7700
COCKFIGHTING CHAIR
21½" W x 18" D x 34" H
Illustrated in mahogany.
Requires 1¾ yds. of 50" plain fabric.



#270
SIDE CHAIR
19" W x 19" D x 35½" H
Illustrated in mahogany with brass nails.
Requires 1 yd. of 50" plain fabric.



GUILDHALL



#445
SIDE CHAIR
18 $\frac{1}{4}$ "W x 18 $\frac{1}{2}$ "D x 38 $\frac{1}{2}$ "H
Illustrated in oak with slip seat.
Requires $\frac{2}{3}$ yd. of 50" plain fabric.



#445
ARMCHAIR
20"W x 18 $\frac{1}{2}$ "D x 38 $\frac{1}{2}$ "H
Illustrated in oak with slip seat.
Requires $\frac{2}{3}$ yd. of 50" plain fabric.



#2135
BENCH
26"W x 16"D x 18"H
Illustrated in mahogany, with fully upholstered top.
Requires 1 yd. of 50" plain fabric.



#2136
BENCH
34"W x 16"D x 17 $\frac{1}{2}$ "H
Illustrated in walnut.
Requires 1 yd. of 50" plain fabric.



#444
SIDE CHAIR
19"W x 17"D x 35 $\frac{1}{2}$ "H
Illustrated in oak with oversized nail heads.
Requires 1 $\frac{1}{3}$ yds. of 50" plain fabric.



#444
ARMCHAIR
24"W x 18 $\frac{1}{2}$ "D x 35 $\frac{1}{2}$ "H
Illustrated in oak with oversized nail heads.
Requires 1 $\frac{1}{3}$ yds. of 50" plain fabric.



GUILDHALL

5 DESKS & CREDENZAS

Table Desks
Credenza, Telephone Tables
Executive Desks
Reception Desks



Manulife Financial Head Office



GUILDHALL



#3055

CREDENZA

84"W x 20"D x 30"H

Illustrated in flat cut mahogany with 4 file drawers, 1 cupboard and hand carved rosettes.

#3100C

COMPUTER TABLE

48"W x 30"D x 30"H

Illustrated in flat cut mahogany with cupboard, keyboard drawer and hand carved rosettes.

#3100C

DOUBLE PEDESTAL DESK

84"W x 36"D x 30"H

Illustrated in flat cut mahogany with three panel gold tooled top and hand carved rosettes.



GUILDHALL



#3820

MILITARY TABLE

72"W X 36"D X 30"H

Illustrated in mahogany with yew-wood drawer faces and apron.

False drawer fronts on reverse side of desk.



#3830

MILITARY DOUBLE PEDESTAL DESK

72"W X 36"D X 30"H

Illustrated in mahogany and crotch mahogany combination.

Visitor's side of desk has closed knee-hole.



#3831

MILITARY CREDENZA

72"W X 20"D X 30"H

Illustrated in mahogany and yew-wood.



#3825

MILITARY PEDESTAL DESK

68"W X 32"D X 30"H

Illustrated in mahogany with yew-wood drawer faces. Visitor's side has closed knee-hole and three panels of yew-wood.



G U I L D H A L L



#3100C
BREAKFRONT DOUBLE PEDESTAL DESK
72"W x 36"D x 30"H
Illustrated in mahogany with crotch mahogany drawer fronts, three
panel leather top and applied Chippendale mouldings all around.



#3100C
BREAKFRONT DOUBLE PEDESTAL DESK
72"W x 36"D x 30"H
View of visitor's side.



GUILDHALL



#3005GS

RECEPTION DESK

CUSTOM SIZES AVAILABLE

Illustrated in mahogany with crotch mahogany all around desk with Chippendale mouldings.



#3005GS

RECEPTION DESK

CUSTOM SIZES AVAILABLE

View of visitor's side.



#3185GS

DESK WITH GALLERY AND RETURN

CUSTOM SIZES AVAILABLE

View of visitor's side.



GUILDHALL



#3405

CHIPPENDALE TABLE DESK

72"W X 36"D X 30"H

Illustrated in mahogany with crotch mahogany drawer fronts and apron with single panel leather top and fluted leg with foot.



#3050

CREDENZA

72"W X 20"D X 30"H

Illustrated in mahogany with crotch mahogany drawers and door faces.



G U I L D H A L L



#3425

T A B L E D E S K

61" W X 31" D X 30" H (LARGER SIZES AVAILABLE)

Illustrated with shaped crotch mahogany apron, one piece leather top and pull-out slide at either end.



#3400A

T A B L E D E S K

66" W X 30" D X 30" H

Illustrated in mahogany with crotch mahogany drawer faces and apron with an alternate fret bracket and one piece leather top.



#3400B

T A B L E D E S K

66" W X 34" D X 30" H

Illustrated in mahogany with crotch mahogany drawer faces and apron with gadroon edge



G U I L D H A L L



#3175
DOUBLE PEDESTAL DESK
60"W X 30"D X 30"H
View of visitor's side.



#3150A
CABINET
36"W X 18"D X 30"H
Illustrated in walnut with burl walnut and
hand carved rosettes.



#3175
DOUBLE PEDESTAL DESK
60"W X 30"D X 30"H
Illustrated in walnut with burl walnut all around with
Chippendale mouldings and hand carved rosettes.



#3150
CREDENZA
66"W X 20"D X 30"H
Illustrated in walnut with burl walnut drawer and door faces
with Chippendale mouldings and hand carved rosettes.



G U I L D H A L L



#3701

PARTNER'S DESK

76" W X 36" D X 30" H

Illustrated in mahogany and crotch mahogany with an inlaid border detail on the drawer faces and a three piece leather top.



#3000

DOUBLE PEDESTAL DESK

72" W X 36" D X 30" H

Illustrated in mahogany with crotch mahogany faces and wood top.



#3055

CREDENZA

72" W X 20" D X 30" H

Illustrated in mahogany with crotch mahogany faces.
Drawer configuration to suit your specifications.



GUILDHALL



#3252

QUEEN ANNE TABLE DESK

72"W X 36"D X 30"H

Illustrated in mahogany with crotch mahogany drawer faces and panels.

Fluted corner gadroon mouldings and hand carved legs with ball and claw feet.



#3252

QUEEN ANNE TABLE DESK

72"W X 36"D X 30"H

View of visitor's side.



#3253

TELEPHONE CABINET

22"W X 18"D X 27½"H

Illustrated in mahogany and crotch mahogany with hand carved legs and ball and claw feet.



GUILDHALL



#3249

QUEEN ANNE DESK

72"W X 36"D X 30"H

Illustrated in mahogany and crotch mahogany with wood top.
Hand carving on knee of legs.



#3249

QUEEN ANNE DESK

72"W X 36"D X 30"H

View of visitor's side.



#3254

TELEPHONE CABINET

24"W X 20"D X 30"H

Illustrated in mahogany with crotch mahogany on face and back. Equipped with grommet for wiring.



GUILDHALL



#3005

DOUBLE PEDESTAL DESK

72"W X 36"D X 30"H

Illustrated in crotch mahogany with frame around leather bed crossbanded in crotch mahogany. Single panel leather top. Applied Chippendale mouldings.



#5000

CABINET

60"W X 20"D X 34"H

Illustrated in mahogany with crotch mahogany doors.



#5000

CABINET

34"W X 16"D X 34"H

Illustrated in mahogany with crotch mahogany doors.



GUILDHALL



#3185

DOUBLE PEDESTAL DESK

72"W x 38"D x 36"H

View of visitor's side.



#3840

TABLE DESK

60"W x 30"D x 29"H

Illustrated in mahogany with gold leaf trim on the hand carving at the top of the legs.



#3845

TABLE DESK

60"W x 30"D x 30"H

Illustrated in mahogany with one piece leather top.



GUILDHALL



#3185

DESK

72" W x 38" D x 30" H

Illustrated in mahogany with crotch mahogany. Chippendale mouldings all around, three panel leather top and hand carved edge.



#3841A

TABLE DESK

72" W x 36" D x 30" H

Illustrated in mahogany and yew-wood with inlaid drawers and hand carving at the top of each leg. Available with wood or leather top.



#3841

TABLE DESK

72" W x 36" D x 30" H

Illustrated in mahogany and yew-wood with inlaid drawers and one piece leather top. Hand carving on the top of each leg.



G U I L D H A L L



#3195

CREDENZA

78"W X 21"D X 30"H

Illustrated in mahogany with crotch mahogany on drawer faces and ends of cabinet, fluted corner posts on front only.



#3200

PEDESTAL TABLE DESK

72"W X 36"D X 30"H

Illustrated in mahogany with crotch mahogany drawer faces.



#3190

DOUBLE PEDESTAL DESK

72"W X 36"D X 30"H

Illustrated in mahogany with crotch mahogany drawer faces, fluted corner posts and three panel leather top.



#3192

CREDENZA

72"W X 20"D X 30"H

Illustrated in flat cut mahogany with rounded corner posts.



G U I L D H A L L



#3250

T A B L E D E S K

72"W x 36"D x 30"H

Illustrated in mahogany with crotch mahogany drawer faces
with inlaid ebony line and leather top.



#3205

C R E D E N Z A

62"W x 21"D x 30"H

Illustrated in mahogany with crotch mahogany drawer faces.



G U I L D H A L L



#3600

TABLE DESK

72"W x 36"D x 30"H

Illustrated in mahogany with crotch mahogany drawer faces and three panel leather top. Reverse side of desk has false drawer faces. There are oval inlays on the apron above the legs with an inlaid boxwood line on the legs.



#3010

TELEPHONE STAND

31"W x 20"D x 30"H

Illustrated in mahogany with finished back.



#3000SR

SECRETARIAL DESK WITH SIDE RETURN

60"W x 30"D x 30"H

Illustrated in flat cut mahogany.

Return dimensions: 51"W x 18"D x 26"H



G U I L D H A L L



#3400C

T A B L E D E S K

96"W x 42"D x 30"H

Illustrated in mahogany with crotch mahogany drawer faces
and three panel leather top.



#3015

C A B I N E T

30"W x 19"D x 26"H

Illustrated in mahogany with crotch mahogany drawer
and door faces with inlays.



#3051

C R E D E N Z A

72"W x 20"D x 28"H

Illustrated in mahogany with crotch mahogany drawer faces and Chippendale
mouldings. Drawer or door configuration to suit your specifications.



GUILDHALL



#3001GS

SECRETARIAL DESK WITH GALLERY

CUSTOM SIZES AVAILABLE

Illustrated in flat cut mahogany with Chippendale mouldings.



#3001

EXECUTIVE DESK WITH RETURN

CUSTOM SIZES AVAILABLE

Illustrated in flat cut mahogany with Chippendale mouldings.

Also available in secretarial version.



#3001

EXECUTIVE DESK WITH RETURN

CUSTOM SIZES AVAILABLE

View of visitor's side.



G U I L D H A L L



#3500

T A B L E D E S K

54"W x 32"D x 30"H

Illustrated in mahogany with crotch mahogany drawer faces, apron and leather top.



#3300

T A B L E D E S K

72"W x 36"D x 30"H

Illustrated in mahogany and crotch mahogany with one piece leather top.



#3350

T A B L E D E S K

72"W x 36"D x 30"H

Illustrated in mahogany with crotch mahogany drawer faces and three panel leather top.



#3260

T A B L E D E S K

72"W x 36"D x 30½"H

Illustrated in mahogany with crotch mahogany all around, single panel leather top. Drawer faces repeated on reverse side of desk.



G U I L D H A L L



#3251
QUEEN ANNE TABLE DESK
72"W X 36"D X 30"H
View of visitor's side.



#4005
QUEEN ANNE TABLE DESK
60"W X 30"D X 26½"H
Illustrated in walnut with burl walnut drawer faces.



#3225
TABLE DESK
72"W X 36"D X 30½"H
Illustrated in mahogany with crotch mahogany drawer fronts
and three panel leather top.



GUILDHALL



#3251

QUEEN ANNE TABLE DESK

72"W x 36"D x 30"H

Illustrated in mahogany with yew-wood all around, fluted corners and gadroon carving.



#3650

TABLE DESK

60"W x 30"D x 30"H

Illustrated in mahogany with crotch mahogany drawer faces. Boxwood inlaid legs with oval inlays above. Drawer faces repeated on reverse side.



#3601

OVAL TABLE DESK

72"W x 36"D x 30"H

Illustrated in mahogany with crotch mahogany all around apron with a single drawer and leather top. Legs inlaid with boxwood line and the Prince of Wales feather inlay above.



G U I L D H A L L



#3815

STAND-UP DESK.

36"W x 28"D x 53"H

Illustrated in mahogany with crotch mahogany
drawer faces and 2 pull-out tirettes.



#3406

CHIPPENDALE STAND-UP DESK

36"W x 28"D x 44"H

Illustrated in mahogany with crotch mahogany drawer face.



#3810B

STAND-UP DESK

36"W x 28"D x 50"H

Illustrated in mahogany with crotch mahogany drawer faces.



G U I L D H A L L

6 SOFT SEATING

Sofas
Wing Chairs
Club Chairs



Manulife Financial Head Office



G U I L D H A L L



#2120

C H I P P E N D A L E S O F A

74" W X 31½" D X 29½" H

Illustrated with diamond tufted upholstery.

Requires 11½ yds. of 50" wide plain fabric.

(11 yds. for plain upholstery)



#316

L O V E S E A T

57" W X 33" D X 36" H

Illustrated with scroll arm and down cushion.

Requires 9 yds. of 50" wide plain fabric for the loveseat
and 12 yds. for the 80" sofa.



#1240

A D A M S E T T E E

54½" W X 20½" D X 33" H

Illustrated in mahogany with hand carvings and buttoned seat.

Requires 6 yds. of 50" wide fabric for cushion seat and 4½ yds.
for tight seat.



#2550
 CHIPPENDALE SOFA
 87" W x 31" D x 36½" H
 Illustrated with mahogany show wood.
 Requires 12 yds. of 50" wide fabric.
 Seat depth 21".



#2550A
 CHIPPENDALE CLUB CHAIR
 29" W x 31" D x 37" H
 Illustrated with mahogany show wood.
 Requires 6½ yds. of 50" wide plain fabric.
 Seat depth 20½".



#2560
 TWO SEATER SOFA
 83½" W x 34¾" D x 33¼" H
 Requires 14 yds. of 50" wide plain fabric.
 Seat depth 22".



#2560A
 CLUB CHAIR
 41" W x 34¾" D x 33¼" H
 Requires 9 yds. of 50" wide plain fabric.
 Seat depth 22".



#2520
 SOFA
 82" W x 36½" D x 29" H
 Illustrated with diamond tufted upholstery.
 Requires 16 yds. of 50" wide plain fabric.
 Seat depth 23".



#2520A
 CLUB CHAIR
 36" W x 36½" D x 29" H
 Illustrated with diamond tufted upholstery.
 Requires 10½ yds. of 50" wide plain fabric.
 Seat depth 23".



GUILD HALL



#1737

SOFA

75½" W x 31" D x 35½" H

Illustrated in mahogany show wood with scrolled arms and camel back.

Requires 12 yds. of 50" plain fabric.

Seat depth 21".



#1669

BOWES-DALY SOFA

84½" W x 31" D x 35½" H

Illustrated in mahogany with hand carving.

Requires 14 yds. of 50" plain fabric.

Seat depth 23".



#2535

THREE SEATER SOFA

76" W x 33" D x 28¾" H

Requires 18 yds. of 50" wide plain fabric.

Seat depth 21".



#1660

HEPPLEWHITE SOFA

72" W x 28" D x 36" H

Illustrated in mahogany with hand carving.

Requires 12 yds. of 50" plain fabric.

Seat depth 21".



#2600

CAMEL BACK SOFA

77" W x 31" D x 37½" H

Illustrated with mahogany show wood.

Requires 11½ yds. of 50" wide plain fabric.

Seat depth 21".



#2026A

SOFA

84" W x 25½" D x 34" H

Illustrated in mahogany.

Requires 9 yds. of 50" wide plain fabric.

Seat depth 20½".



GUILDHALL



#2085

WING CHAIR

31" W x 32½" D x 43" H

Illustrated in mahogany show wood with brass nails.

Requires 7 yds. of 50" plain fabric.



#2081

WING CHAIR

28" W x 33" D x 39½" H

Illustrated in mahogany show wood.

Requires 6 yds. of 50" plain fabric.



#2095

WING CHAIR

29½" W x 29½" D x 45½" H

Illustrated in mahogany show wood with brass nails.

Requires 6½ yds. of 50" plain fabric.



#2090

WING CHAIR

28" W x 31½" D x 45" H

Illustrated in mahogany show wood.

Requires 7 yds. of 50" plain fabric.



GUILDHALL



#2096

WING CHAIR

33"W X 32"D X 49½"H

Illustrated in walnut with carved ball and claw front legs and turned stretchers.

Requires 7½ yds. of 50" wide plain fabric.



#474

WING CHAIR

24¼"W X 32"D X 34¼"H

Illustrated with mahogany show wood.

Requires 5½ yds. of 50" plain fabric.



#479

WING CHAIR

28"W X 26"D X 43"H

Illustrated with walnut and hand carved Queen Anne legs.

Requires 6 yds. of 50" plain fabric.



#478

WING CHAIR

29¾"W X 31"D X 45"H

Illustrated in mahogany with Queen Anne legs.

Requires 6½ yds. of 50" plain fabric.



GUILD HALL



#5623

WILLIAM BIRCH ARMCHAIR

27"W x 33"D x 30"H

Illustrated with mahogany show wood.

Requires 8 yds. of 50" wide plain fabric. Seat depth 22".



#2510

THREE SEATER SOFA

86"W x 33"D x 27"H

Illustrated in upholstery fabric.

Requires 19 yds. of 50" wide plain fabric. Seat depth 23".



#2530

TUXEDO SOFA

86"W x 33"D x 28"H

Illustrated in upholstered fabric.

Requires 19 yds. of 50" wide plain fabric. Seat depth 23".



#2565

THREE SEATER SOFA

84"W x 33"D x 33"H

Illustrated with saddle arm.

Requires 19 yds. of 50" wide plain fabric. Seat depth 22".



#2062

THREE SEATER SOFA

84"W x 36½"D x 32"H

Illustrated with William Birch arm.

Requires 22 yds. of 50" wide plain fabric. Seat depth 22½".



GUILDHALL

7

TABLES

Occasional Tables
Coffee Tables
Lamp Tables
Consoles Tables



Newcourt Credit Group



GUILDHALL



#4132
LAMP TABLE
24" DIA X 23"H
Illustrated in mahogany.



#4305
OCCASIONAL TABLE
24"W X 17½"D X 22"H
Illustrated in mahogany with crotch
mahogany top.



#4151
LAMP TABLE
28"W X 24"D X 26"H
Illustrated in mahogany with four piece book
matched crotch mahogany top and scalloped
gallery top.



#4125
LAMP TABLE
18"W X 24"D X 26"H
Illustrated in mahogany with crotch
mahogany top.



#285A
OCCASIONAL TABLE
24"W X 18"D X 23"H
Illustrated in mahogany and yew-wood.



#758
PEMBROKE TABLE
39"W X 32"D X 24"H leaves up (20"W with leaves down)
Illustrated in mahogany with four piece crotch mahogany top
with yew-wood crossbanding.



GUILDHALL



#4100
LAMP TABLE
20"W X 24"D X 25"H
Illustrated in mahogany.



#961
COFFEE TABLE
32"W X 18"D X 16"H
Illustrated in mahogany.



#4150
LAMP TABLE
18½"W X 24"D X 26"H
Illustrated in mahogany.



#4215
LAMP TABLE
25"W X 25"D X 24"H
Illustrated in mahogany with crotch mahogany top and apron.



#4210
COFFEE TABLE
30"W X 30"D X 17"H
Illustrated in mahogany with crotch mahogany apron and four piece crotch mahogany top.



#4205
LAMP TABLE
24"W X 24"D X 23"H
Illustrated in mahogany with crotch mahogany top and apron.



#4225
LAMP TABLE
30"W X 30"D X 22"H
Illustrated in mahogany with four piece crotch mahogany top.



#4212
COFFEE TABLE
36"W X 36"D X 17"H
Illustrated in mahogany with four piece crotch mahogany top and crotch mahogany apron.



#4145
COFFEE TABLE
24"W X 24"D X 17"H
Illustrated in mahogany with overlay fret.



GUILDHALL



#4200
LAMP TABLE
24"W X 24"D X 25"H
Illustrated in mahogany.



#4135
NIGHT TABLE
19"W X 16"D X 25"H
Illustrated in mahogany and crotch mahogany.



#112
BUTLER'S TRAY TABLE
40"W X 31"D X 17½"H (30½"W X 21½"D with top folded up)
Illustrated in mahogany.



#4245
LAMP TABLE
18"W X 26"D X 23"H
Illustrated in mahogany.



#4252
TEA TABLE
30"W X 24"D X 24"H
Illustrated in mahogany with
crotch mahogany top.



#4140
LAMP TABLE
23"W X 17"D X 26"H
Illustrated in mahogany with
crotch mahogany drawer face.



GUILDHALL



#4340
LAMP TABLE
26" W X 18" D X 23" H
Illustrated in mahogany with inlaid border.



#4240
CHIPPENDALE COFFEE TABLE
44" W X 22" D X 17 1/2" H
Illustrated in mahogany.



#4310
OCCASIONAL TABLE
25 1/4" W X 16" D X 26" H
Illustrated in mahogany.



#4320
LAMP TABLE
22" W X 26" D X 23" H
Illustrated in mahogany with crotch mahogany drawer face and inlaid border.



#4440
TEA TABLE
40" W X 20 1/2" D X 20" H
Illustrated in mahogany.



#4295
TEA TABLE
27 3/4" W X 21 3/4" D X 21 1/2" H
Illustrated in mahogany.



#753
PEMBROKE TABLE
40" W X 28" D X 26" H
Illustrated in mahogany with yew-wood crossband.
(21 3/8" W X 28" D with flaps down)



#4211
COFFEE TABLE
36" W X 22" D X 21" H (17" H to top of tray)
Illustrated in mahogany.



#4129
DROP LEAF
OCCASIONAL TABLE
41" W X 27" D X 26" H (21 3/4" D with flaps down)
Illustrated in mahogany with yew-wood drawer face.



G U I L D H A L L



#131
L A M P T A B L E
16"W x 24"D x 23"H
Illustrated in mahogany with crotch
mahogany top and inlays.



#4341B
L A M P T A B L E
22"W x 22"D x 23"H
Illustrated in mahogany with crotch mahogany top
and satinwood borders.



#4308
L A M P T A B L E
23½"W x 18½"D x 24"H
Illustrated in mahogany with shelf
and inlaid apron.



#4296
M I L I T A R Y O C C A S I O N A L
T A B L E
27"W x 27"D x 20"H
Illustrated in mahogany.



#4195
C O F F E E T A B L E
33"W x 33"D x 17"H
Illustrated in walnut with tinted inset glass top.



#4329
L A M P T A B L E
30"W x 26"D x 21½"H
Illustrated in maple with birds eye maple top
with drawer and shelf.



G U I L D H A L L



#4336

QUEEN ANNE COFFEE TABLE

46"W X 21½"D X 19"H

Illustrated in walnut with burled walnut top, hand-carved legs and shell carving.



#4337

QUEEN ANNE LAMP TABLE

24"W X 15"D X 27"H

Illustrated in mahogany.



#4335

QUEEN ANNE COFFEE TABLE

30"W X 30"D X 17½"H

Illustrated in mahogany with four piece crotch mahogany top.



#975

NEST OF TABLES

20½"W X 15"D X 23"H

Illustrated in mahogany with crotch mahogany top with inlaid border.



#139

NEST OF TABLES

18"W X 14"D X 22"H

Illustrated in mahogany with crotch mahogany tops.



#109

NEST OF TABLES

20"W X 13¼"D X 22"H

Illustrated in mahogany with yew-wood tops.



GUILDHALL



#122

COFFEE TABLE

36" DIA X 15"H

Illustrated in mahogany with four piece crotch mahogany top with yew-wood crossbanding and oval inlay of satinwood and boxwood.



#602A

LAMP TABLE

23" DIA X 24"H

Illustrated in mahogany with wood edge.
Also available with cross edge.



#602B

OVAL LAMP TABLE

26"W X 21"D X 24"H

Illustrated in mahogany with brass edge. Also available with wood edge.



#4341A

OVAL COFFEE TABLE

36"W X 26"D X 17½"H

Illustrated in mahogany with four piece crotch mahogany top with yew-wood border and satinwood inlay at centre.



#4280

COFFEE TABLE

36" DIA X 18"H

Illustrated in mahogany with four piece crotch mahogany top. Available in oval and rectangular shapes.



#4196

COFFEE TABLE

36"W X 22"D X 15½"H

Illustrated in mahogany with two piece centre matched crotch mahogany top with inlaid borders.



GUILDHALL



#740
OVAL PEDESTAL COFFEE TABLE
48"W X 34"D X 18"H
Illustrated in mahogany with four piece crotch
mahogany top and crotch mahogany crossbanding.



#178
OVAL COFFEE TABLE
39"W X 32"D X 16"H
Illustrated in mahogany with four piece crotch
mahogany top and yew-wood crossbanding.



#4134
COFFEE TABLE
48"DIA X 19"H
Illustrated in mahogany with starburst top
and rosewood crossbanding.



#179
PEDESTAL COFFEE TABLE
39"W X 32"D X 18"H
Illustrated in mahogany with yew-wood
crossbanding.



#4351
PEDESTAL COFFEE TABLE
36"DIA X 20"H
Illustrated in mahogany with apron. Four piece
crotch mahogany top and yew-wood
crossbanded border.



#187
PEDESTAL COFFEE TABLE
36"W X 26"D X 18"H
Illustrated in mahogany with four piece crotch
mahogany top and yew-wood crossbanding.



GUILDHALL



#4370
ROUND LAMP TABLE
24" DIA X 26"H
Illustrated in mahogany.



#292C
LAMP TABLE
23½"W X 18½"D X 21"H
Illustrated in mahogany with high brass
gallery on edge of top.



#4375
LAMP TABLE
26" DIA X 25"H
Illustrated in mahogany with high
brass gallery on edge of top.



#292
OVAL COFFEE TABLE
36"W X 26"D X 17"H
Illustrated in walnut with lip brass edge and
brass sabots.



#4376
OVAL COFFEE TABLE
39"W X 32"D X 18"H
Illustrated in mahogany with crotch mahogany
top with yew-wood border and brass ormolu.



#292A
COFFEE TABLE
38"W X 38"D X 18"H
Illustrated in mahogany with leather top.



GUILDHALL



#174
LAMP TABLE
22"W X 22"D X 23"H
Illustrated in mahogany with rosewood
crossbanded top and ebony legs.



#4197
COFFEE TABLE
20"W X 20"D X 17"H
Illustrated in walnut with french brasses,
gilt trim and inset glass top. Usually
sold in pairs.



#296
LAMP TABLE
24"W X 24"D X 23"H
Illustrated in mahogany with ebony finish,
gold accents and brasses.



#794
LAMP TABLE
20"W X 25"D X 25"H
Illustrated in walnut with painted finish.



#791
LAMP TABLE
22"W X 22"D X 23"H
Illustrated in walnut.



#346
LAMP TABLE
18"W X 26"D X 23"H
Illustrated in mahogany with
crotch mahogany top.



#406
OCCASIONAL TABLE
24"W X 18"D X 26"H
Illustrated in walnut.



#988
LAMP TABLE
18"W X 26"D X 23"H
Illustrated in mahogany with plaque azurée.



#4264
NIGHT TABLE
24"W X 18"D X 26"H
Illustrated in mahogany.



G U I L D H A L L



#4155
PEDESTAL TABLE
18"DIA X 22"H
Illustrated with piecrust edge
and hand carved legs.



#4185
PEDESTAL TABLE
16"DIA X 22"H
Illustrated in mahogany.



#4175
PEDESTAL TABLE
27"DIA X 27"H
Illustrated with carved piecrust edge.



#4355
PEDESTAL TABLE
30"D X 29½"H
Illustrated in mahogany.



#4465
DRUM TABLE
29½"D X 25½"H
Illustrated in mahogany, leather top and one
operating drawer. Also available in
24" diameter and wood top.



#4189
PEDESTAL TABLE
23"DIA X 25"H
Illustrated in mahogany with insert raised
brass gallery.



#208
OCCASIONAL TABLE
18"DIA X 24"H
Illustrated in mahogany with lip brass edge.



#132
PEDESTAL TABLE
18"DIA X 18"H
Illustrated in mahogany with yew-wood top.



#957
PEDESTAL TABLE
16"DIA X 20"H
Illustrated in walnut.



GUILDHALL



#6000

DRUM TABLE

51" DIA X 29 $\frac{3}{4}$ " H

Illustrated in mahogany with crotch mahogany faces. Available with simulated or four operating drawers. Edge of top and apron below drawers are banded with cherry and boxwood. Also available with inlaid leather top.



#4455

DRUM TABLE

36" DIA X 30" H

Illustrated in mahogany with four piece crotch mahogany top and four operating drawers.



#4457

DRUM TABLE

34" DIA X 34" H

Illustrated in mahogany and crotch mahogany apron with crossgrain cherry and boxwood inlay above and below apron. One operating drawer.



GUILDHALL



#6015

DRUM TABLE

51" DIA X 29 $\frac{3}{4}$ " H

Illustrated in mahogany with yew-wood drawer faces.
Available with simulated or four operating drawers.



#6005

REGENCY CENTRE TABLE

48" DIA X 29" H

Illustrated in mahogany with yew-wood
crossbanded top and apron.



#6007

CENTRE TABLE

48" DIA X 30" H

Illustrated in mahogany with rosewood apron
and crossbanded border on top surface.



GUILDHALL



#385
COFFEE TABLE
41½" W X 21½" D X 16½" H
Illustrated in mahogany with
crotch mahogany and rosewood.



#6008
CENTRE TABLE
36" DIA X 30" H
Illustrated in mahogany with crotch mahogany
top, rosewood apron and crossband on top.



#908
EMPIRE LAMP TABLE
26" DIA X 26½" H
Illustrated in mahogany with ebonized
columns.



#291
CONSOLE TABLE
54" W X 18" D X 32" H
Illustrated in mahogany with crotch mahogany
apron and optional marble top.



#304
CONSOLE TABLE
49" W X 17" D X 36" H
Illustrated in mahogany with optional marble top.



GUILDHALL



#4460

DRUM TABLE

26" DIA X 27"H

Illustrated in mahogany and crotch mahogany with inlaid top and apron.



#6001

OCCASIONAL TABLE

30" DIA X 27"H

Illustrated in mahogany with crotch mahogany crossband and ebonized base.



#4456

DRUM TABLE

28" DIA X 28"H

Illustrated in mahogany with yew-wood top and apron and four operating drawers.



#6006

CENTRE TABLE

38" DIA X 29"H

Illustrated in mahogany with brass ormolu on apron.



GUILDHALL



#481
COFFEE TABLE
54"W X 37"D X 19"H
Illustrated in oak.



#463
COFFEE TABLE
38"W X 19½"D X 17¼"H
Illustrated in oak.



#475
COFFEE TABLE (PAIR)
20"W X 20"D X 16"H
Illustrated in oak.



#468
PEDESTAL TABLE
24"DIA X 21½"H
Illustrated in oak.



#466
LAMP TABLE
22"W X 22"D X 23"H
Illustrated in oak.



#464
LAMP TABLE
24"DIA X 23½"H
Illustrated in oak.



#457
NEST OF TABLES
22"W X 14"D X 19"H
Illustrated in oak.



GUILDHALL



#842B
LAMP TABLE
26" DIA X 23"H
Illustrated in walnut with hand carved base.



#472
DROP LEAF OCCASIONAL
TABLE
26" DIA X 23"H
Illustrated in solid oak.



#462
LAMP TABLE
24"W X 17½"D X 22¼"H
Illustrated in solid oak.



#842A
LOTUS BASE COFFEE TABLE
36" DIA X 18"H
Illustrated with hand carved painted base
and wood top.



#460
DROP LEAF COFFEE TABLE
54"W X 34½"D X 17"H (closed 54"W X 16½"D X 17"H)
Illustrated in oak.



GUILDHALL



#520

LYRE BASE SOFA TABLE

57½" W x 22½" D x 28½" H

Illustrated in mahogany with yew-wood drawer faces and crossbanding.



#4300

SOFA TABLE

69" W x 20" D x 29½" H (closed 42" W x 20" D x 29½" H)

Illustrated in mahogany with yew-wood drawer faces.



#108

SERPENTINE CONSOLE TABLE

48" W x 16" D x 32" H

Illustrated in mahogany with crotch mahogany apron.



#608

CONSOLE TABLE

42" W x 17" D x 29½" H

Illustrated in mahogany with crotch mahogany faces.



#162
 BREAKFRONT CONSOLE TABLE
 72"W x 20"D x 33"H
 Illustrated in mahogany with crotch mahogany
 drawer faces.



#4016
 SERPENTINE CONSOLE
 TABLE
 33"W x 15"D x 30"H
 Illustrated in mahogany with crotch mahogany
 top and apron with urn inlay in centre.



#4018
 SERPENTINE CONSOLE
 TABLE
 48"W x 16"D x 32"H
 Illustrated with crotch mahogany on apron with
 inlays.



#103
 SERPENTINE OCCASIONAL
 TABLE
 29"W x 14"D x 32"H
 Illustrated in mahogany.



GUILDHALL



#4030
BREAKFRONT CONSOLE
TABLE
66"W x 17"D x 33"H
Illustrated in mahogany with crotch mahogany
drawer faces and inlaid border on top surface.



#4040
SIDEBOARD
74"W x 19"D x 32"H
Illustrated in oak.



#453
CONSOLE TABLE WITH THREE DRAWERS
72"W x 18"D x 31"H
Illustrated in oak.



GUILDHALL



#609

CONSOLE TABLE

66"W x 17"D x 33"H

Illustrated in mahogany with crotch mahogany drawer faces and inlays.



#4015

CONSOLE TABLE

48"W x 24"D x 29½"H

Illustrated in mahogany with crotch mahogany apron. Sizes up to 54" wide.



#4000

CONSOLE TABLE WITH TWO DRAWERS.

60"W x 16"D x 32"H

Illustrated in mahogany with crotch mahogany drawer faces.



GUILDHALL



#759

SOFA TABLE

58"W X 24"D X 28½"H (closed 36½"W X 24"D X 28½"H)

Illustrated in mahogany with crotch mahogany crossband.



#4011

SEMI-CIRCULAR CONSOLE
TABLE

40"W X 20"D X 29½"H

Illustrated in mahogany.



#170

CONSOLE TABLE

36"W X 16"D X 30"H

Illustrated in antique painted finish
with wood top.



#4360

CONSOLE TABLE

38½"W X 16"D X 30"H

Illustrated in mahogany with two-piece crotch
mahogany top and yew-wood crossbanding.



GUILDHALL



#136

SOFA TABLE

58"W X 24"D X 28½"H (closed 36½"W X 24"D X 28½"H)

Illustrated in mahogany.



#153

CONSOLE TABLE

39"W X 18"D X 32"H

Illustrated in mahogany with inlays.



#4365

CONSOLE TABLE

51"W X 16"D X 33"H

Illustrated in mahogany with two piece
book-matched crotch mahogany top with inlaid
boxwood line.



#159

CONSOLE TABLE

33"W X 17"D X 30"H

Illustrated in mahogany with crotch
mahogany top and inlays.



GUILDHALL



#4126

CONSOLE TABLE

54"W X 16"D X 29 3/4"H

Illustrated in mahogany with two piece crotch mahogany top and crotch mahogany apron.



#3400

GAMES TABLE

34"W X 34"D X 29"H

Illustrated in mahogany and crotch mahogany apron, leather top.



#118

TEA TROLLEY

30"W X 20"D X 28 1/2"H

Illustrated in mahogany. (Casters not as illustrated)



#298

TEA TROLLEY

31 1/2"W X 16 1/2"D X 31"H

Illustrated in mahogany with inlaid top and shelves. (Casters not as illustrated)



#4036

TEA TROLLEY

39"W X 29"D X 29"H (closed 30"W X 20"D X 33 1/2"H)

Illustrated in mahogany. (Casters not as illustrated)



#4037

TEA TROLLEY

30"W X 16 1/2"D X 33"H

Illustrated in cherry. Top tier can function separately as a serving tray if required.



GUILDHALL



#4020

CONSOLE TABLE

60"W x 18½"D x 33"H

Illustrated in book matched yew-wood. Cherry and boxwood on edge of top and edge of shelf.



#4035

SERVING TABLE

40"W x 16"D x 38¼"H

Illustrated in mahogany with yew-wood drawer faces and inlays.



#969

CONSOLE TABLE

36"W x 20"D x 29"H

Illustrated in mahogany and crotch mahogany faces. Top surface has satinwood and rosewood inlaid borders.



#4017

SERPENTINE CONSOLE TABLE

37"W x 18"D x 30"H

Illustrated in mahogany with crotch mahogany apron with inlays and two piece crotch mahogany top.



#4133

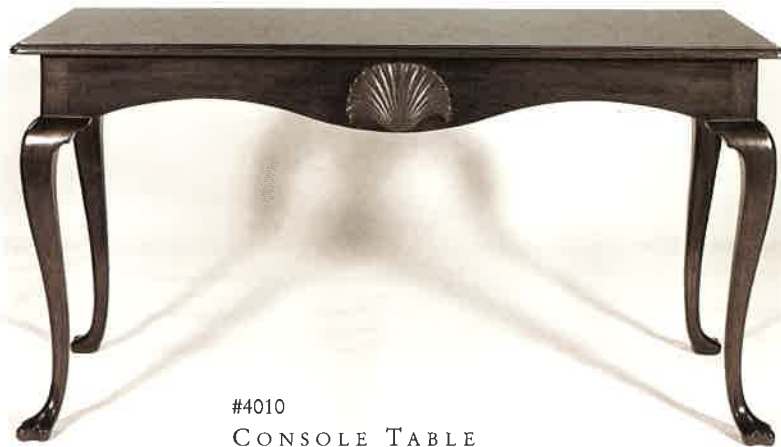
CONSOLE TABLE

48"W x 20"D x 29"H

Illustrated in mahogany with crotch mahogany crossbanding on top surface and edge.



GUILDHALL



#4010
CONSOLE TABLE
60"W X 24"D X 31"H
Illustrated in mahogany with hand carved shell.



#956
CONSOLE TABLE
36"W X 12"D X 30"H
Illustrated in mahogany with satinwood borders.



#4385
SOFA TABLE
48"W X 15"D X 27"H
Illustrated in ebony polish.



#746
CONSOLE TABLE
72"W X 17"D X 32"H
Illustrated in mahogany with gilt trim.



#190
SERVING TABLE
68"W X 21"D X 33"H
Illustrated in walnut with burl walnut and
inlaid drawer faces.



GUILDHALL

8 CUSTOM Selected Specials



The Molson Companies



GUILDHALL



#5625

CUSTOMIZED WILLIAM BIRCH ARMCHAIR

27"W X 33"D X 32"H

Illustrated with mahogany show wood.

Requires 8½ yds. of 50" wide plain fabric.



#4001

CONSOLE TABLE

48"W X 18"D X 32"H

Illustrated in mahogany with yew-wood drawer faces.



#3270

TABLE DESK

54"W X 24"D X 29"H

Illustrated in mahogany with one piece leather top
and turning with gilt.



#2128

BEIDEMEIER SETTEE

61"W X 23"D X 30"H

Illustrated with mahogany show wood.

Requires 6 yds. of 50" wide plain fabric.



GUILDHALL



DINING TABLE

58" DIA X 29½" H

Illustrated in cherry with starburst pattern top.



#4263

BEIDERMEIER CHEST OF DRAWER

36" W X 20" D X 48" H

Illustrated in mahogany with crotch mahogany faces.

Drawers do not lock.



GUILDHALL



ARMOIRE
54"W x 25"D x 90½"H
Illustrated in custom paint finish.



T.V. CABINET
62"W x 36"D x 35½"H
Illustrated in custom paint finish.
Rectangular top panel raises on custom T.V. lifter.



Detail of top inlay.



GUILDHALL



Detail of table desk, design # 3841A - section 5, page 13.



GUILDHALL



#602N
TRANSITIONAL LAMP TABLE

Guildhall has created some of the finest period style furniture for over 55 years. In the box below is an elegant example from our catalogue of close to 500 images that we offer to the Trade. The Lamp Table is made of mahogany with a beautiful inlay on the apron and solid brass feet. As always the finish is Guildhall's hand applied French polish - a finish that only improves with time.

The Lamp Table to the left reinterprets our traditional classic with an updated look. The elegant traditional lines, the mahogany and hand applied French polish all remain. The design is simplified to the bare essentials with the mahogany stained in our "Dark Empire" and the solid brass feet are nickel plated.



#4308
LAMP TABLE



GUILDHALL



#5080N
TRANSITIONAL BREAKFRONT BOOKCASE

Guildhall's breakfront bookcases have become signature pieces over the years, all hallmarks of our cabinetmaker's skills. The cabinet to the right has been reintroduced in a flat cut mahogany without inlays or additional mouldings. The nickel plated escutcheons and our "Dark Empire" stain colour completes a rich transitional appearance. As one of the last manufacturers to offer a true French polish, the finish on this Guildhall cabinet will ensure its place in history.

The cabinet below is one of our original bookcases, handmade in the Chippendale style. Crotch mahogany on the door faces and frieze are accentuated by the Chippendale door mouldings. A simple, individual glass pane design adds to the original timeless elegance of the bookcase.



#5080
BREAKFRONT BOOKCASE



GUILDHALL



#3350N
TRANSITIONAL TABLE DESK



Guildhall has reinterpreted our own traditional Table Desk in a design that retains the timeless lines while accentuating its simplicity. On the desk above the top now becomes a one-piece black leather surface with blind rather than gold tooling. The handles and feet, while still traditional in design, have cleaner lines and the solid brass is nickel plated. The hand turned mahogany stretcher is replaced with a nickel plated metal rod.

To the right is the original Table Desk which is found in our catalogue with almost 500 additional traditional designs. The desk is made of mahogany with crotch mahogany drawer faces and a three piece leather top with 24 carat gold tooling. The period hardware is antiqued solid brass. The wood finish is a true French polish, hand applied over a two week period.



#3350
TABLE DESK



G U I L D H A L L

*G*uildhall began building handmade furniture for the Eaton's Gallery of Fine Furniture over 55 years ago.

One of our original dining room suites included the walnut sideboard pictured to the right. It is made in the Adam style with fluted apron drawers, columns and legs. The corners are canted with hand carved swags above. The hardware is solid brass.

As architects, the Adam brothers adapted classical forms in their furniture. The foundation of the original Guildhall piece remains in our recent adaptation shown below. Some of the ornamentation, the hand carved swags and the flutes on the columns, have been removed. The hardware is now nickel plated including a simple foot and a moulding on the inner edge of the door frame. As with all of our designs the finish is a true French polish. Applied over a period of two weeks, some 300 strokes of the polishers pad create a fine clear depth and a patina that only improves with the passage of time.



#785
SIDEBOARD



#785N
TRANSITIONAL SIDEBOARD



GUILDHALL

NUMERICAL INDEX

Spec.	Section 8	Page 3	Armoire	#153	Section 7	Page 22	Console Table
Spec.	Section 8	Page 3	T.V. Cabinet	#159	Section 7	Page 23	Console Table
Spec.	Section 8	Page 2	Dining Table	#162	Section 7	Page 19	Breakfront Console Table
Spec.	Section 8	Page 3	Detail of T.V. Cabinet	#163	Section 3	Page 8	Single Pedestal Oval Table
#1	Section 3	Page 5	Pedestal Design #1	#170	Section 7	Page 22	Console Table
#1	Section 4	Page 1	Chippendale Armchair	#170	Section 1	Page 8	Two Door Chest
#2	Section 3	Page 2	Pedestal Design #2	#174	Section 7	Page 10	Lamp Table
#3	Section 3	Page 3	Boardroom Pedestal #3	#178	Section 7	Page 8	Oval Coffee Table
#3	Section 4	Page 1	Chippendale Armchair	#179	Section 7	Page 8	Pedestal Coffee Table
#4	Section 3	Page 1	Table with Pedestal Design #4A	#187	Section 7	Page 8	Pedestal Coffee Table
#4	Section 3	Page 1	Meeting Table with Pedestal Design #4A	#190	Section 7	Page 26	Serving Table
#4	Section 4	Page 1	Chippendale Armchair	#198A	Section 2	Page 7	Breakfront Sideboard
#5	Section 3	Page 2	Pedestal Design #5	#201	Section 1	Page 10	Chest of Drawers
#5	Section 4	Page 3	Chippendale Armchair	#201	Section 4	Page 10	Armchair
#6	Section 3	Page 2	Chippendale Conference Table with Base #6	#203	Section 1	Page 10	High Boy
#6	Section 4	Page 1	Chippendale Armchair	#206	Section 1	Page 10	Night Table
#6	Section 3	Page 2	Chippendale Conference Table	#208	Section 7	Page 11	Occasional Table
#7	Section 4	Page 3	Chippendale Armchair	#209	Section 1	Page 4	Military Chest
#7A	Section 4	Page 3	Chippendale Armchair	#211	Section 2	Page 6	Sideboard
#7A	Section 3	Page 2	Oriental Conference Table	#211	Section 1	Page 8	Two Door Chest
#8	Section 4	Page 1	Philadelphia Armchair	#212	Section 2	Page 6	High Cabinet
#9A	Section 3	Page 3	Two Pedestal Dining Table with Pedestal #9	#213	Section 1	Page 5	Military Chest
#9B	Section 3	Page 10	Single Pedestal with Pedestal Design #9	#214	Section 1	Page 5	Military Chest
#10	Section 3	Page 3	Pedestal Design #10	#223	Section 1	Page 5	Military High Boy
#10	Section 4	Page 7	Queen Anne Armchair	#255	Section 4	Page 9	Bank of England Tub Chair
#10	Section 4	Page 7	Queen Anne Sidechair	#270	Section 4	Page 11	Side Chair
#11	Section 3	Page 3	Pedestal Design #11	#281	Section 1	Page 10	Chest on Chest
#12	Section 3	Page 3	Design #12 Pedestal	#282	Section 1	Page 3	Chest of Drawers
#13	Section 3	Page 5	Chippendale Base Design #13	#283	Section 1	Page 10	Double Dresser
#13	Section 4	Page 3	Ladder Back Chippendale Armchair	#285A	Section 7	Page 1	Occasional Table
#13A	Section 3	Page 5	Chippendale Base Design #13A	#291	Section 7	Page 14	Console Table
#14	Section 3	Page 4	Two Pedestal Dining Table with Pedestal #14	#292	Section 7	Page 9	Coffee Table
#14	Section 4	Page 3	Chippendale Armchair	#292A	Section 7	Page 9	Coffee Table
#15	Section 3	Page 5	Two Pedestal Dining Table	#292C	Section 7	Page 9	Lamp Table
#16	Section 3	Page 2	Pedestal Design #16	#295	Section 1	Page 11	Shield Back Armchair
#16	Section 4	Page 3	Chippendale Armchair	#295U	Section 4	Page 11	Shield Back Armchair
#17	Section 3	Page 5	Pedestal Base Design #17	#296	Section 7	Page 10	Lamp Table
#17	Section 4	Page 1	Chippendale Armchair	#298	Section 7	Page 24	Tea Trolley
#18	Section 3	Page 6	Pedestal Design #18	#304	Section 7	Page 14	Console Table
#19	Section 3	Page 9	Conference Table	#311	Section 3	Page 8	Regency Dining Table with Apron
#29	Section 4	Page 2	Side Chair	#316	Section 6	Page 1	Loveseat
#32	Section 4	Page 2	Boardroom Armchair	#317	Section 2	Page 7	Breakfront Sideboard
#32A	Section 4	Page 3	Armchair	#317	Section 1	Page 3	Chest of Drawers
#35	Section 4	Page 4	Armchair	#317A	Section 2	Page 1	Breakfront Sideboard
#35A	Section 4	Page 4	Armchair	#320	Section 4	Page 5	Upholstered Bench
#36	Section 4	Page 2	Armchair	#322	Section 4	Page 6	Queen Anne Bench
#37	Section 4	Page 2	Armchair	#341	Section 1	Page 6	Empire Chest of Drawers
#103	Section 7	Page 19	Serpentine Occasional Table	#343	Section 4	Page 9	Empire Armchair
#108	Section 7	Page 18	Serpentine Console Table	#346	Section 7	Page 10	Lamp Table
#109	Section 7	Page 6	Nest of Tables	#350	Section 1	Page 6	Empire Commode
#110	Section 2	Page 6	Bookcase	#352	Section 1	Page 7	Empire Commode
#110A	Section 1	Page 8	Two Door Chest	#352A	Section 1	Page 7	Empire Two Door Cabinet
#112	Section 7	Page 3	Butler's Tray Table	#364	Section 1	Page 7	Empire Cabinet
#113	Section 1	Page 3	Serpentine Chest	#368	Section 3	Page 10	Two Pedestal Dining Table
#118	Section 7	Page 24	Tea Trolley	#383	Section 2	Page 4	Empire Sideboard
#122	Section 7	Page 7	Coffee Table	#385	Section 7	Page 14	Coffee Table
#131	Section 7	Page 5	Lamp Table	#389	Section 3	Page 9	Dining Table
#132	Section 7	Page 11	Pedestal Table	#406	Section 7	Page 10	Occasional Table
#133	Section 1	Page 4	Miniature Chest	#415	Section 2	Page 16	Breakfront Bookcase
#136	Section 7	Page 23	Sofa Table	#444	Section 4	Page 12	Armchair
#139	Section 7	Page 6	Nest of Tables	#444	Section 4	Page 12	Side Chair
#143	Section 2	Page 1	Sideboard	#445	Section 4	Page 12	Armchair



GUILDHALL

#445	Section 4	Page 12	Armchair	#951	Section 1	Page 1	Semi-Circular Commode
#445	Section 4	Page 12	Side Chair	#956	Section 7	Page 26	Console Table
#450	Section 3	Page 6	Dining Table	#957	Section 7	Page 11	Pedestal Table
#452	Section 2	Page 3	Serving Table with Two Drawers	#961	Section 7	Page 2	Coffee Table
#453	Section 7	Page 20	Console Table with Three Drawers	#969	Section 7	Page 25	Console Table
#457	Section 7	Page 16	Nest of Tables	#975	Section 7	Page 6	Nest of Tables
#460	Section 7	Page 17	Drop Leaf Coffee Table	#978A	Section 2	Page 11	Serpentine Sideboard
#462	Section 7	Page 17	Lamp Table	#988	Section 7	Page 10	Lamp Table
#463	Section 7	Page 16	Coffee Table	#998	Section 3	Page 9	Dining Table
#464	Section 7	Page 16	Lamp Table	#1240	Section 6	Page 1	Adam Settee
#465	Section 3	Page 8	Dining Table	#1282	Section 4	Page 6	Hourglass Back Settee
#466	Section 7	Page 16	Lamp Table	#1282A	Section 4	Page 6	Hourglass Back Armchair
#468	Section 7	Page 16	Pedestal Table	#1660	Section 6	Page 3	Hepplewhite Sofa
#472	Section 7	Page 17	Drop Leaf Occasional Table	#1669	Section 6	Page 3	Bowes-Daly Sofa
#473	Section 3	Page 7	Dining Table	#1737	Section 6	Page 3	Sofa
#473B	Section 3	Page 7	Dining Table	#1956	Section 4	Page 6	Armchair
#474	Section 6	Page 5	Wing Chair	#1957	Section 4	Page 6	Armchair
#474	Section 3	Page 8	Dining Table	#1958	Section 4	Page 8	Empire Armchair
#475	Section 7	Page 16	Coffee Table	#1958K	Section 4	Page 8	Empire Armchair
#478	Section 6	Page 5	Wing Chair	#2000	Section 4	Page 10	Transitional Armchair
#479	Section 6	Page 5	Wing Chair	#2005	Section 4	Page 8	Regency Armchair
#481	Section 7	Page 16	Coffee Table	#2006	Section 4	Page 9	Empire Chair
#502	Section 3	Page 10	Dining Table	#2008	Section 4	Page 8	Armchair
#503	Section 1	Page 8	Two Door Commode	#2009	Section 4	Page 10	Castle Howard Chair
#512	Section 4	Page 11	Tub Chair	#2012	Section 4	Page 11	Hepplewhite Swivel Back Armchair
#517	Section 3	Page 6	Dining Table	#2014	Section 4	Page 10	Carved Stick Back Armchair
#518	Section 4	Page 10	Tub Chair	#2021	Section 4	Page 8	Tub Chair
#520	Section 7	Page 18	Lyre Base Sofa Table	#2025	Section 4	Page 9	Tub Chair
#522	Section 2	Page 12	Breakfront Bookcase	#2026	Section 4	Page 8	Tub Chair
#535	Section 2	Page 2	Bookcase	#2026A	Section 6	Page 3	Sofa
#536	Section 2	Page 16	Breakfront Sideboard	#2030	Section 4	Page 2	Armchair
#536A	Section 1	Page 4	Cabinet	#2031	Section 4	Page 2	Armchair
#554	Section 1	Page 6	Double Dresser	#2040	Section 4	Page 2	Armchair
#602A	Section 7	Page 7	Lamp Table	#2045	Section 4	Page 2	Armchair
#602B	Section 7	Page 7	Oval Lamp Table	#2061	Section 4	Page 4	Armchair
#602N	Section 8	Page 5	Transitional Lamp Table	#2062	Section 6	Page 6	Three Seater Sofa
#608	Section 7	Page 18	Console Table	#2064	Section 4	Page 10	Transitional Armchair
#609	Section 7	Page 21	Console Table	#2081	Section 6	Page 4	Wing Chair
#713	Section 1	Page 9	Two Drawer Chest	#2085	Section 6	Page 4	Wing Chair
#723	Section 3	Page 7	Round Dining Table	#2090	Section 6	Page 4	Wing Chair
#724	Section 2	Page 6	Sideboard	#2095	Section 6	Page 4	Wing Chair
#740	Section 7	Page 8	Oval Pedestal Coffee Table	#2096	Section 6	Page 5	Wing Chair
#746	Section 7	Page 26	Console Table	#2100	Section 4	Page 5	Georgian Armchair
#753	Section 7	Page 4	Pembroke Table	#2101	Section 4	Page 5	Armchair
#758	Section 7	Page 1	Pembroke Table	#2105	Section 4	Page 5	Georgian Armchair
#759	Section 7	Page 22	Sofa Table	#2120	Section 6	Page 1	Chippendale Sofa
#771	Section 2	Page 2	Bookcase	#2128	Section 8	Page 1	Biedermeier Settee
#785	Section 2	Page 16	Sideboard	#2130	Section 4	Page 5	Bench
#785	Section 3	Page 9	Oval Dining Table	#2135	Section 4	Page 12	Bench
#785A	Section 2	Page 2	Breakfront Bookcase	#2136	Section 4	Page 12	Bench
#785N	Section 8	Page 8	Transitional Sideboard	#2155	Section 4	Page 6	Armchair
#791	Section 7	Page 10	Lamp Table	#2170	Section 4	Page 7	Armchair
#794	Section 7	Page 10	Lamp Table	#2171	Section 4	Page 7	Armchair
#834	Section 1	Page 8	Chest of Drawers	#2172	Section 4	Page 7	Queen Anne Armchair
#836	Section 1	Page 8	High Boy	#2175	Section 4	Page 7	Armchair
#842A	Section 7	Page 17	Lotus Base Coffee Table	#2180	Section 4	Page 2	Armchair
#842B	Section 7	Page 17	Lamp Table	#2181	Section 4	Page 4	Boardroom Armchair
#844	Section 3	Page 7	Drop Leaf Table	#2195	Section 4	Page 9	Empire Armchair
#885	Section 1	Page 9	Bombay Chest	#2195S	Section 4	Page 9	Empire Side Chair
#889	Section 4	Page 6	Dressing Bench	#2510	Section 6	Page 6	Three Seater Sofa
#908	Section 7	Page 14	Empire Lamp Table	#2520	Section 6	Page 2	Sofa
#942	Section 3	Page 7	Dining Table	#2520A	Section 6	Page 2	Tub Chair
#944	Section 3	Page 10	Double Pedestal Table	#2530	Section 6	Page 6	Tuxedo Sofa
#945	Section 3	Page 6	Two Pedestal Dining Table	#2535	Section 6	Page 3	Three Seater Sofa
#947	Section 1	Page 1	Semi-Circular Commode	#2550	Section 6	Page 2	Chippendale Sofa
#948	Section 3	Page 8	Queen Anne Double Pedestal Table	#2550A	Section 6	Page 2	Chippendale Club Chair



GUILD HALL

#2560	Section 6	Page 2	Two Seater Sofa	#3600	Section 5	Page 16	Table Desk
#2560A	Section 6	Page 2	Club Chair	#3601	Section 5	Page 21	Oval Table Desk
#2565	Section 6	Page 6	Three Seater Sofa	#3650	Section 5	Page 21	Table Desk
#2600	Section 6	Page 3	Camel Back Sofa	#3701	Section 5	Page 8	Partner's Desk
#2800	Section 4	Page 4	Swivel Chair	#3810B	Section 5	Page 22	Stand-Up Desk
#2800DT	Section 4	Page 4	Swivel Chair	#3815	Section 5	Page 22	Stand-Up Desk
#2840	Section 4	Page 4	Swivel Chair	#3820	Section 5	Page 2	Military Table
#3000	Section 5	Page 8	Double Pedestal Desk	#3825	Section 5	Page 2	Military Pedestal Desk
#3000SR	Section 5	Page 16	Secretarial Desk with Side Return	#3830	Section 5	Page 2	Military Double Pedestal Desk
#3001	Section 5	Page 18	Executive Desk with Return	#3831	Section 5	Page 2	Military Credenza
#3001	Section 5	Page 18	Executive Desk with Return	#3840	Section 5	Page 12	Table Desk
#3001GS	Section 5	Page 18	Secretarial Desk with Gallery	#3841	Section 5	Page 13	Table Desk
#3005	Section 5	Page 11	Double Pedestal Desk	#3841A	Section 5	Page 13	Table Desk
#3005GS	Section 5	Page 4	Reception Desk	#3845	Section 5	Page 12	Table Desk
#3005GS	Section 5	Page 4	Reception Desk	#4000	Section 7	Page 21	Console Table with Two Drawers
#3010	Section 5	Page 16	Telephone Stand	#4001	Section 8	Page 1	Console Table
#3015	Section 5	Page 17	Cabinet	#4005	Section 5	Page 20	Queen Anne Table Desk
#3025B	Section 2	Page 4	High cabinet	#4010	Section 7	Page 26	Console Table
#3050	Section 5	Page 5	Credenza	#4011	Section 7	Page 22	Semi-Circular Console Table
#3051	Section 5	Page 17	Credenza	#4015	Section 7	Page 21	Console Table
#3055	Section 5	Page 8	Credenza	#4016	Section 7	Page 19	Serpentine Console Table
#3055	Section 5	Page 1	Credenza	#4017	Section 7	Page 25	Serpentine Console Table
#3100C	Section 5	Page 3	Breakfront Double Pedestal Desk	#4018	Section 7	Page 19	Serpentine Console Table
#3100C	Section 5	Page 3	Breakfront Double Pedestal Desk	#4020	Section 7	Page 25	Console Table
#3100C	Section 5	Page 1	Computer Table	#4030	Section 7	Page 20	Breakfront Console Table
#3100C	Section 5	Page 1	Double Pedestal Desk	#4035	Section 7	Page 25	Serving Table
#3125	Section 2	Page 5	Breakfront Sideboard	#4036	Section 7	Page 24	Tea Trolley
#3126	Section 2	Page 5	Breakfront Sideboard	#4037	Section 7	Page 24	Tea Trolley
#3127	Section 2	Page 15	Bow Front Sideboard	#4040	Section 7	Page 20	Sideboard
#3130	Section 2	Page 9	Credenza	#4100	Section 7	Page 2	Lamp Table
#3150	Section 5	Page 7	Credenza	#4125	Section 7	Page 1	Lamp Table
#3150A	Section 5	Page 7	Cabinet	#4126	Section 7	Page 24	Console Table
#3175	Section 5	Page 7	Double Pedestal Desk	#4129	Section 7	Page 4	Drop Leaf Occasional Table
#3175	Section 5	Page 7	Double Pedestal Desk	#4132	Section 7	Page 1	Lamp Table
#3185GS	Section 5	Page 4	Desk with Gallery and Return	#4133	Section 7	Page 25	Console Table
#3185	Section 5	Page 13	Desk	#4134	Section 7	Page 8	Coffee Table
#3185	Section 5	Page 12	Double Pedestal Desk	#4135	Section 7	Page 3	Night Table
#3190	Section 5	Page 14	Double Pedestal Desk	#4140	Section 7	Page 3	Lamp Table
#3192	Section 5	Page 14	Credenza	#4145	Section 7	Page 2	Coffee Table
#3195	Section 5	Page 14	Credenza	#4150	Section 7	Page 2	Lamp Table
#3200	Section 5	Page 14	Pedestal Table Desk	#4151	Section 7	Page 1	Lamp Table
#3205	Section 5	Page 15	Credenza	#4155	Section 7	Page 11	Pedestal Table
#3225	Section 5	Page 20	Table desk	#4175	Section 7	Page 11	Pedestal Table
#3249	Section 5	Page 10	Queen Anne Desk	#4185	Section 7	Page 11	Pedestal Table
#3249	Section 5	Page 10	Queen Anne Desk	#4189	Section 7	Page 11	Pedestal Table
#3250	Section 5	Page 15	Table desk	#4195	Section 7	Page 5	Coffee Table
#3251	Section 5	Page 21	Queen Anne Table Desk	#4196	Section 7	Page 7	Coffee Table
#3251	Section 5	Page 20	Queen Anne Table Desk	#4197	Section 7	Page 10	Coffee Table (Pair)
#3252	Section 5	Page 9	Queen Anne Table Desk	#4200	Section 7	Page 3	Lamp Table
#3252	Section 5	Page 9	Queen Anne Table Desk	#4205	Section 7	Page 2	Lamp Table
#3253	Section 5	Page 9	Telephone Cabinet	#4210	Section 7	Page 2	Coffee Table
#3254	Section 5	Page 10	Telephone Cabinet	#4211	Section 7	Page 4	Coffee Table
#3255	Section 1	Page 2	Cabinet	#4212	Section 7	Page 2	Coffee Table
#3260	Section 5	Page 19	Table Desk	#4215	Section 7	Page 2	Lamp Table
#3270	Section 8	Page 1	Table Desk	#4225	Section 7	Page 2	Lamp Table
#3300	Section 5	Page 19	Table Desk	#4240	Section 7	Page 4	Chippendale Coffee Table
#3350	Section 5	Page 19	Table Desk	#4245	Section 7	Page 3	Lamp Table
#3350N	Section 8	Page 7	Transitional Table Desk	#4252	Section 7	Page 3	Tea Table
#3400	Section 7	Page 24	Games Table	#4260	Section 1	Page 4	Miniature Chest
#3400A	Section 5	Page 6	Table desk	#4261	Section 1	Page 4	Miniature Chest
#3400B	Section 5	Page 6	Table Desk	#4262	Section 1	Page 4	Miniature Chest
#3400C	Section 5	Page 17	Table Desk	#4263	Section 8	Page 2	Biedermeier Chest of Drawer
#3405	Section 5	Page 5	Chippendale Table Desk	#4264	Section 7	Page 10	Night Table
#3406	Section 5	Page 22	Chippendale Stand-Up Desk	#4270	Section 1	Page 4	Miniature Chest
#3425	Section 5	Page 6	Table Desk	#4271	Section 1	Page 4	Chippendale Miniature Chest
#3500	Section 5	Page 19	Table Desk	#4272	Section 1	Page 6	Chippendale Double Dresser



GUILD HALL

#4280	Section 7	Page 7	Coffee Table	#5080N	Section 8	Page 6	Transitional Breakfront Bookcase
#4295	Section 7	Page 4	Tea Table	#5085	Section 2	Page 12	Bookcase
#4296	Section 7	Page 5	Military Occasional Table	#5086	Section 2	Page 13	Bookcase
#4300	Section 7	Page 18	Sofa Table	#5090	Section 2	Page 3	Breakfront Bookcase
#4305	Section 7	Page 1	Occasional Table	#5090A	Section 2	Page 16	Breakfront Bookcase
#4308	Section 7	Page 5	Lamp Table	#5091	Section 2	Page 10	Breakfront Bookcase
#4310	Section 7	Page 4	Occasional Table	#5092	Section 2	Page 10	Breakfront Bookcase
#4320	Section 7	Page 4	Lamp Table	#5093	Section 2	Page 9	Breakfront Bookcase
#4329	Section 7	Page 5	Lamp Table	#5095	Section 2	Page 11	Breakfront Bookcase
#4335	Section 7	Page 6	Queen Anne Coffee Table	#5096	Section 2	Page 12	Breakfront Bookcase
#4336	Section 7	Page 6	Queen Anne Coffee Table	#5623	Section 6	Page 6	William Birch Armchair
#4337	Section 7	Page 6	Queen Anne Lamp Table	#5625	Section 8	Page 1	Custom William Birch Armchair
#4340	Section 7	Page 4	Lamp Table	#6000	Section 7	Page 12	Drum Table
#4341A	Section 7	Page 7	Oval Coffee Table	#6001	Section 7	Page 15	Occasional Table
#4341B	Section 7	Page 5	Lamp Table	#6005	Section 7	Page 13	Regency Centre Table
#4351	Section 7	Page 8	Pedestal Coffee Table	#6006	Section 7	Page 15	Centre Table
#4355	Section 7	Page 11	Pedestal Table	#6007	Section 7	Page 13	Centre Table
#4360	Section 7	Page 23	Console Table	#6008	Section 7	Page 14	Centre Table
#4365	Section 7	Page 23	Console Table	#6015	Section 7	Page 13	Drum Table
#4370	Section 7	Page 9	Round Lamp Table	#6020	Section 3	Page 6	Drop Leaf Conference or Dining Table
#4375	Section 7	Page 9	Lamp Table	#6035	Section 3	Page 9	Empire Centre Table
#4376	Section 7	Page 9	Oval Coffee Table	#7700	Section 4	Page 11	Cock Fighting Chair
#4385	Section 7	Page 26	Sofa Table	#8120	Section 1	Page 1	Semi-Circular Commode
#4440	Section 7	Page 4	Tea Table	#8121	Section 1	Page 2	Semi-Circular Commode
#4455	Section 7	Page 12	Drum Table	#8121A	Section 1	Page 2	Semi-Circular Commode
#4456	Section 7	Page 15	Drum Table				
#4457	Section 7	Page 12	Drum Table				
#4460	Section 7	Page 15	Drum Table				
#4465	Section 7	Page 11	Drum Table				
#5000	Section 5	Page 11	Cabinet				
#5000	Section 5	Page 11	Cabinet				
#5006	Section 1	Page 7	Commode				
#5010	Section 2	Page 1	Breakfront Bookcase				
#5010AV	Section 2	Page 14	Audio Visual Cabinet				
#5010AV	Section 2	Page 15	Audio Visual Cabinet				
#5011	Section 2	Page 5	Breakfront Bookcase				
#5015	Section 2	Page 4	Empire Breakfront Bookcase				
#5016	Section 2	Page 7	Empire Cabinet				
#5017	Section 2	Page 10	Breakfront Cabinet				
#5018AV	Section 2	Page 14	Biedermeier Audio Visual Cabinet				
#5018AV	Section 2	Page 14	Biedermeier Audio Visual Cabinet				
#5019AV	Section 2	Page 14	Biedermeier Audio Visual Cabinet				
#5019AV	Section	Page	Biedermeier Audio Visual Cabinet				
#5020	Section 2	Page 2	Breakfront Bookcase				
#5020B	Section 2	Page 8	Breakfront Bookcase				
#5040	Section 2	Page 7	Bookcase				
#5043	Section 2	Page 12	Corner Cabinet				
#5044	Section 2	Page 13	Bookcase				
#5045	Section 2	Page 13	Bookcase				
#5057	Section 2	Page 4	Sideboard				
#5058	Section 2	Page 11	Sideboard				
#5059	Section 1	Page 3	Bow Front Chest of Drawers				
#5060	Section 1	Page 4	Chest of Drawers				
#5061	Section 2	Page 8	Commode				
#5061A	Section 2	Page 8	Bowfront Sideboard				
#5061B	Section 2	Page 15	Sideboard				
#5062	Section 1	Page 9	Chest of drawers				
#5064	Section 1	Page 2	Bow Front Commode				
#5065	Section 1	Page 1	Serpentine Chest				
#5066	Section 1	Page 5	Serpentine Chest				
#5067	Section 2	Page 13	Queen Anne High Boy				
#5068	Section 2	Page 3	Queen Anne Serpentine Sideboard				
#5069	Section 2	Page 9	Chippendale Cabinet with Bow Front				
#5073	Section 1	Page 10	A.V. Cabinet				
#5074	Section 2	Page 12	Display Cabinet				
#5080	Section 2	Page 10	Breakfront Bookcase				